

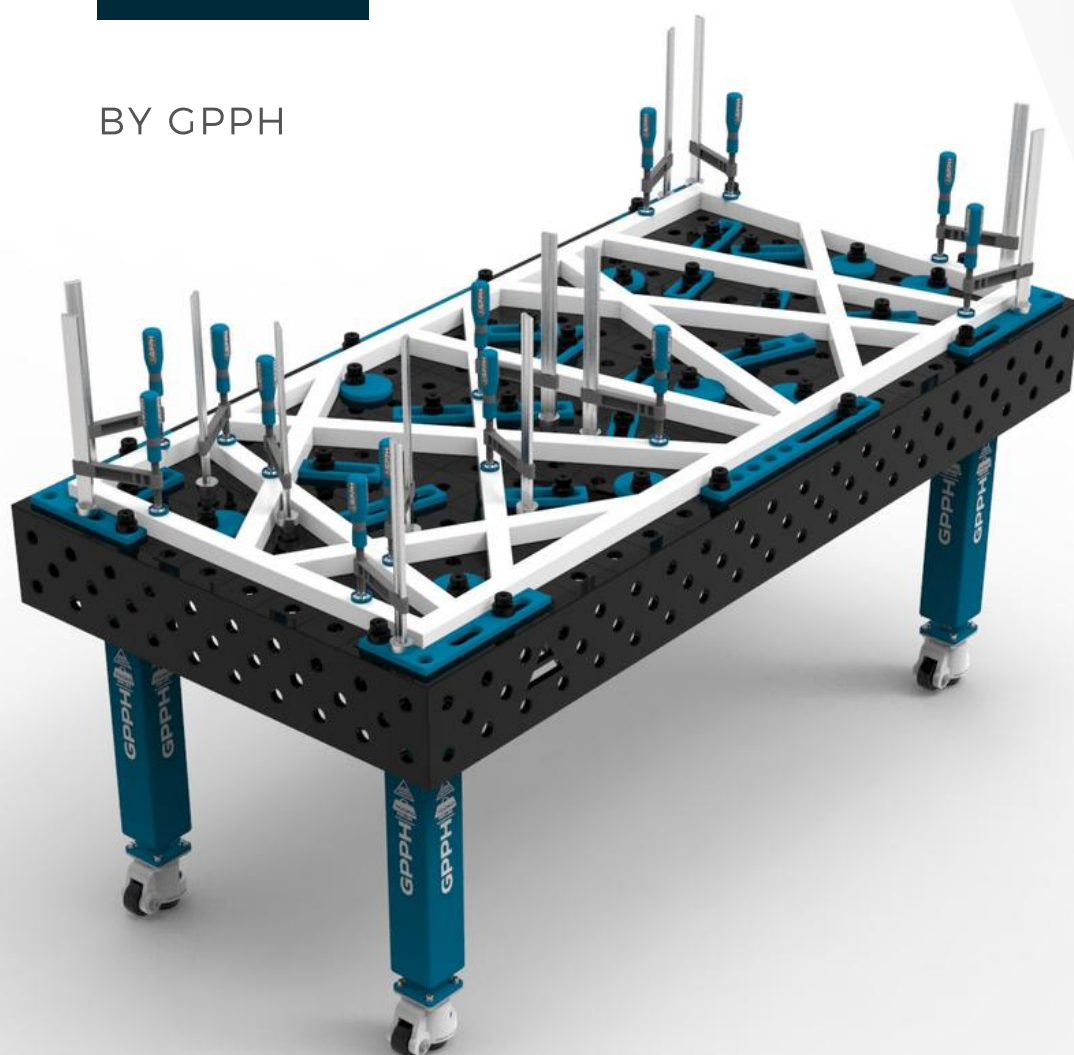
# GRUPA PROJEKTOWO PRODUKCYJNO HANDLOWA



## GPPH PRODUCTS OFFER

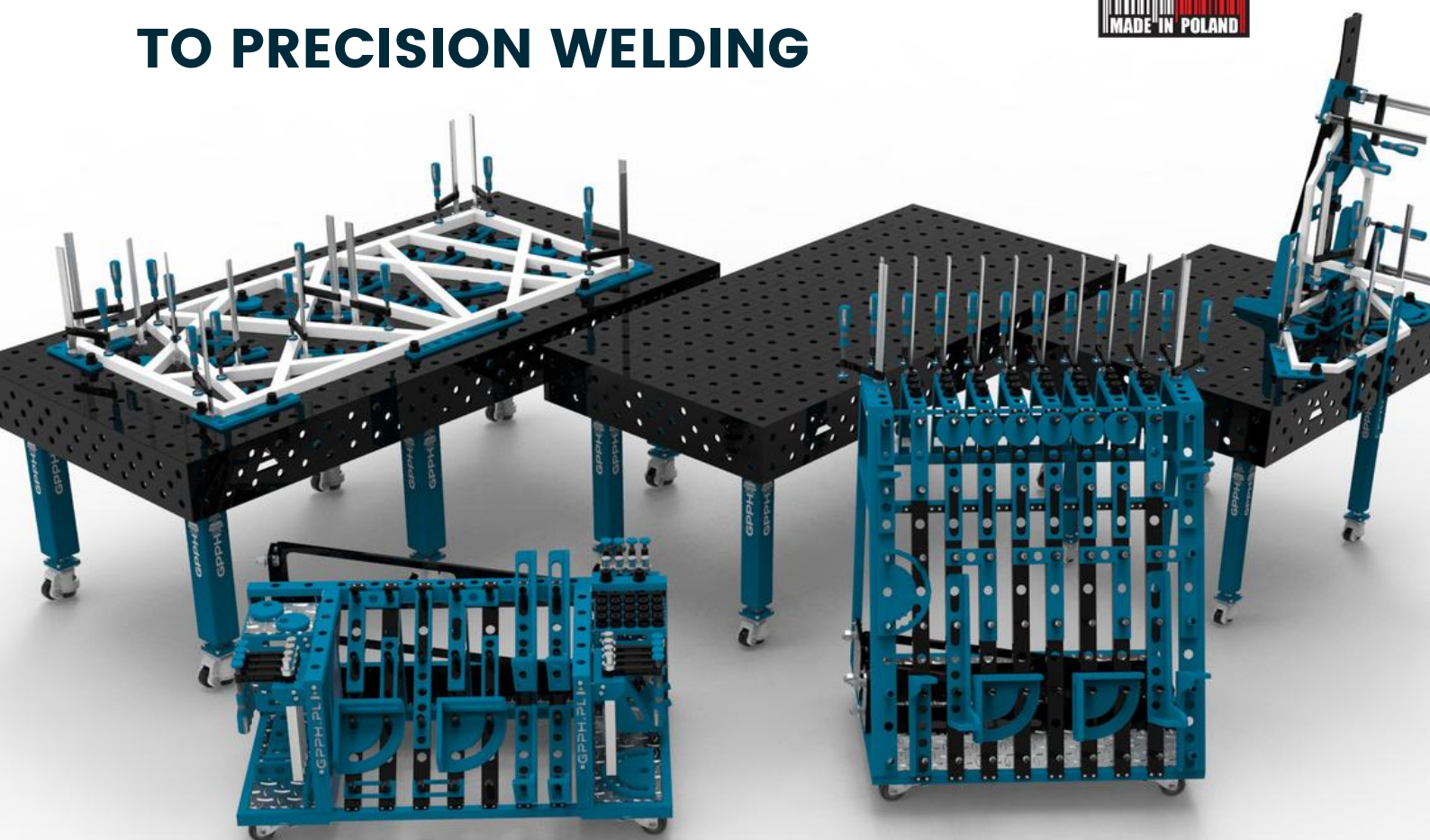
GET THE ADVANTAGE  
OF GPPH PRODUCTS  
BY MAKING PRECISE  
CONSTRUCTIONS IN  
A MUCH SHORTER TIME!

BY GPPH



We think outside the box, and the results are easily seen in our creative solutions. We believe that everything we do challenges the "status quo." We change the world by helping other companies to become stronger. It just so happens that we produce excellent welding tools, which are not only user-friendly but also beautifully designed. Our mutual respect and pursuit of the highest goals result in cooperation with the best specialists in the industry around the world.

## PROFESSIONAL APPROACH TO PRECISION WELDING

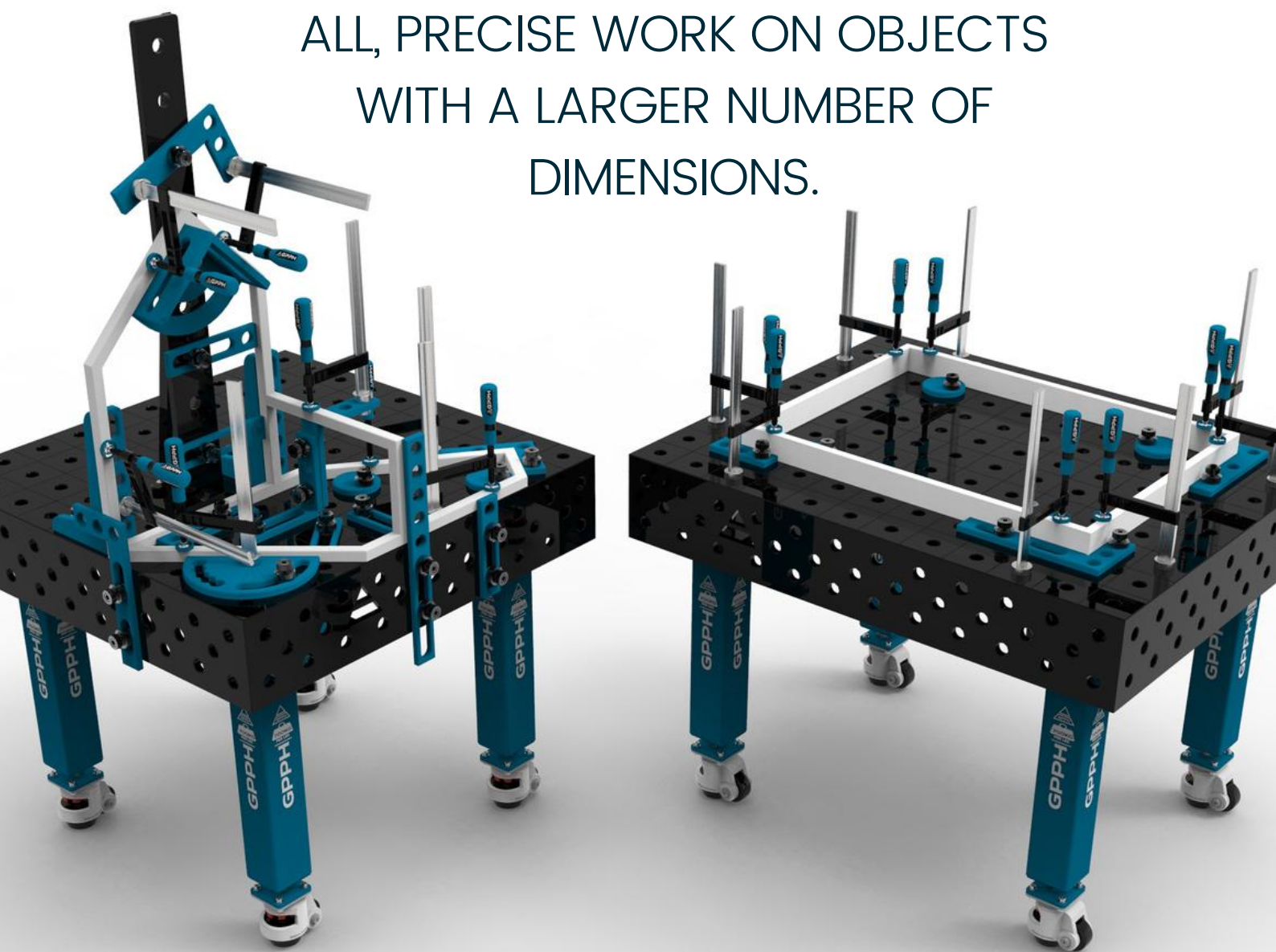


# TABLE OF CONTENTS

1. Traditional Welding Tables PRO	5
◦ Technical parameters	6
◦ Dimensions of Traditional Welding Tables PRO	7
2. Traditional Welding Tables PLUS	12
◦ Technical parameters	13
◦ Dimensions of Traditional Welding Tables PLUS	14
3. Traditional Welding Tables ECO	19
◦ Technical parameters	20
◦ Dimensions of Traditional Welding Tables ECO	21
4. Greater mobility of the GPPH Welding Table – Legs on a wheel!	26
5. Stainless steel covers for GPPH Traditional Welding Tables	27
6. Modular Welding Tables GPPH	28
◦ Technical parameters	29
◦ Advantages and benefits of Modular Tables	30
◦ Dimensions and types of GPPH Modular Welding Tables	32
◦ Additional equipment for Modular Welding Tables	34
7. Additional equipment for GPPH Welding Tables	35
◦ Tooling PRO	36
◦ Tooling PLUS	40
◦ Tooling ECO	44
◦ Fastening clamps	48
◦ Angle clamps, prisms	51
◦ Welding torch handle, toolshelves	52
◦ Professional chemicals	54
8. Toolkit proposal for GPPH Welding Tables	55
◦ Toolkit PRO no. 1	56
◦ Toolkit PRO no. 2	57
◦ Toolkit PRO no. 3	58
◦ Toolkit PRO no. 4	59
◦ Toolkit PLUS no. 1	60
◦ Toolkit PLUS no. 2	61
◦ Toolkit PLUS no. 3	62
◦ Toolkit PLUS no. 4	63
◦ Toolkit ECO no. 1	64
◦ Toolkit ECO no. 2	65
◦ Toolkit ECO no. 3	66
◦ Toolkit ECO no. 4	67
9. Order does metter – GPPH Tool Trolley	68

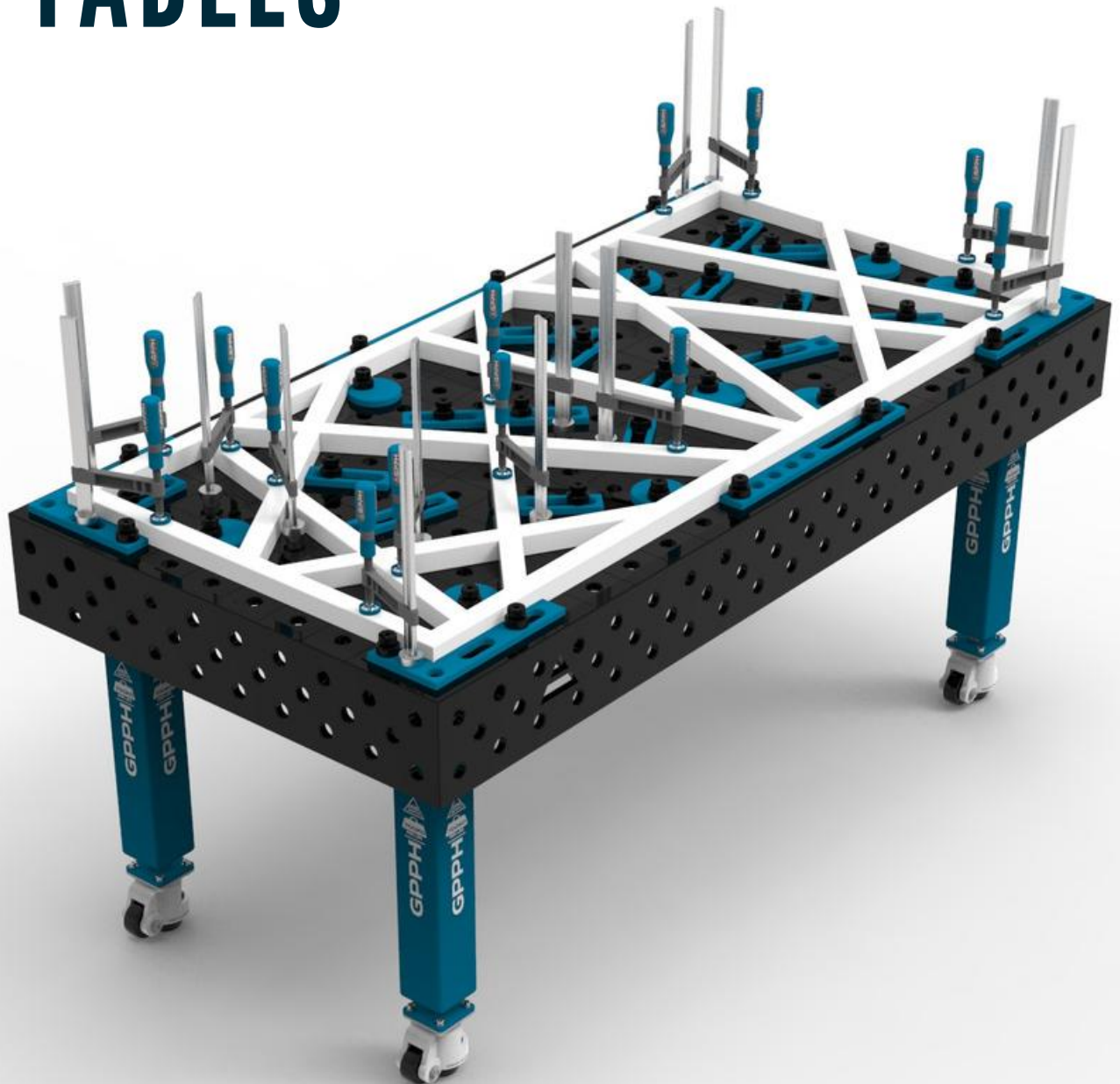
# WORK SMARTER, NOT HARDER

WELDING TABLE PROVIDES FAST AND  
ERROR-FREE OPTIONS FOR MACHINING  
A SIMPLE 2D-CONSTRUCTION  
(E.G. BUILDING OF RAILINGS), BUT ABOVE  
ALL, PRECISE WORK ON OBJECTS  
WITH A LARGER NUMBER OF  
DIMENSIONS.



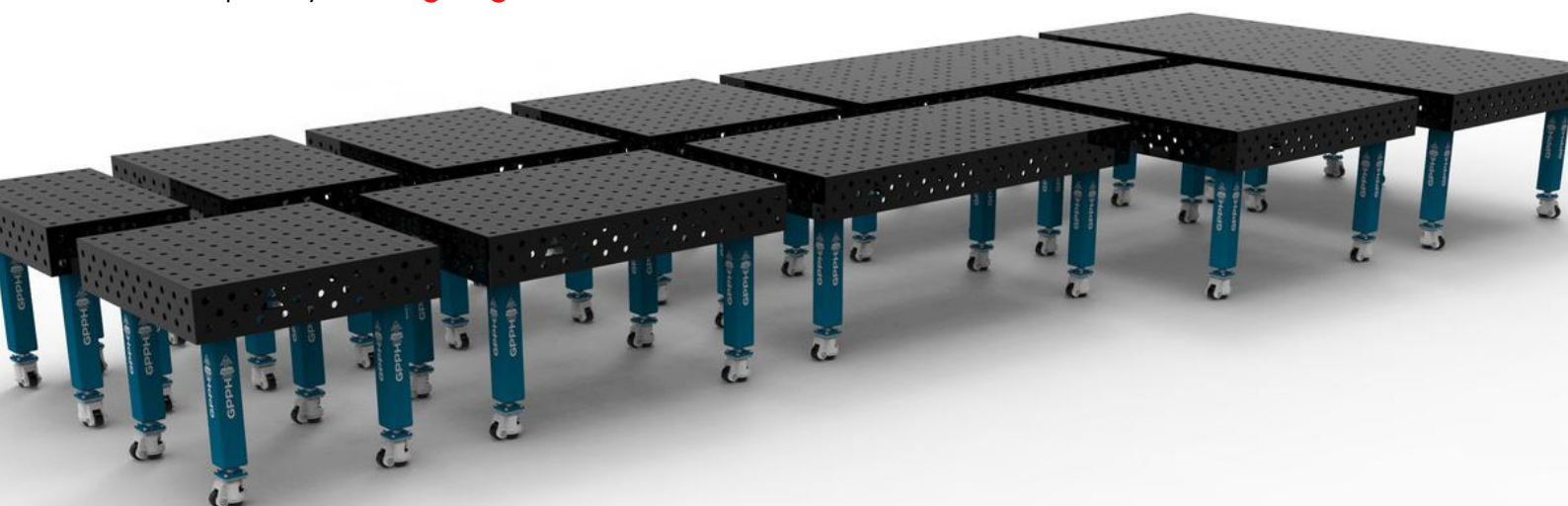


# GPPH TRADITIONAL WELDING TABLES<sup>PRO</sup>



# TECHNICAL PARAMETERS

- ✓ Stable and massive construction
- ✓ The highest quality of workmanship
- ✓ Perfect flatness of the table [ + / - 0,5mm ]
- ✓ Made of S355J2+N
- ✓ Holes of system ø16 or ø28 in the grid 100x100
- ✓ Three grids of holes on the 4 sides
- ✓ Chamfered and milled holes for easy tool assembly
- ✓ Engraved scale in the grid 100x100mm
- ✓ Height adjustment of the table with standard legs approx. 880-930mm
- ✓ Possibility of using stainless steel covers
- ✓ Tables can be combined freely to extend a working surface
- ✓ All tables are reinforced with ribs
- ✓ Produced with standard ISO 2768-1
- ✓ Milled worktop edges
- Thickness **15mm**
- Table legs made of profile **100x100mm**
- Capacity: **700kg/leg\***



\*Applies to standard legs on the foot. When it comes to legs on wheels, it is the static load capacity - it refers to the situation where the table is supported on the feet protruding from the wheels.



# DIMENSIONS OF TRADITIONAL WELDING TABLES<sup>PRO</sup>



## GPPH TRADITIONAL WELDING TABLE<sup>PRO</sup> TWT.PRO.300148

- length x width: 3000x1480mm
- side plate: 200mm
- table weight: approx. 980 kg
- capacity: 5 600 kg
- number of legs: 8



## GPPH TRADITIONAL WELDING TABLE<sup>PRO</sup> TWT.PRO.240120

- length x width: 2400x1200mm
- side plate: 200mm
- table weight: approx. 630 kg
- capacity: 4 200 kg
- number of legs: 6



# DIMENSIONS OF TRADITIONAL WELDING TABLES<sup>PRO</sup>



## GPPH TRADITIONAL WELDING TABLE<sup>PRO</sup> TWT.PRO.200100

- length x width: 2000x1000mm
- side plate: 200mm
- table weight: approx. 460 kg
- capacity: 2 800 kg
- number of legs: 4



## GPPH TRADITIONAL WELDING TABLE<sup>PRO</sup> TWT.PRO.150148

- length x width: 1500x1480mm
- side plate: 200mm
- table weight: approx. 460 kg
- capacity: 2 800 kg
- number of legs: 4





# DIMENSIONS OF TRADITIONAL WELDING TABLES<sup>PRO</sup>



## GPPH TRADITIONAL WELDING TABLE<sup>PRO</sup> TWT.PRO.150100

- length x width: 1500x1000mm
- side plate: 200mm
- table weight: approx. 370 kg
- capacity: 2 800 kg
- number of legs: 4



## GPPH TRADITIONAL WELDING TABLE<sup>PRO</sup> TWT.PRO.120120

- length x width: 1200x1200mm
- side plate: 200mm
- table weight: approx. 350 kg
- capacity: 2 800 kg
- number of legs: 4



# DIMENSIONS OF TRADITIONAL WELDING TABLES<sup>PRO</sup>



## GPPH TRADITIONAL WELDING TABLE<sup>PRO</sup> TWT.PRO.120100

- length x width: 1200x1000mm
- side plate: 200mm
- table weight: approx. 320 kg
- capacity: 2 800 kg
- number of legs: 4



## GPPH TRADITIONAL WELDING TABLE<sup>PRO</sup> TWT.PRO.12080

- length x width: 1200x800mm
- side plate: 200mm
- table weight: approx. 270 kg
- capacity: 2 800 kg
- number of legs: 4



# DIMENSIONS OF TRADITIONAL WELDING TABLES<sup>PRO</sup>



## GPPH TRADITIONAL WELDING TABLE<sup>PRO</sup> TWT.PRO.100100

- length x width: 1000x1000mm
- side plate: 200mm
- table weight: approx. 280 kg
- capacity: 2 800 kg
- number of legs: 4

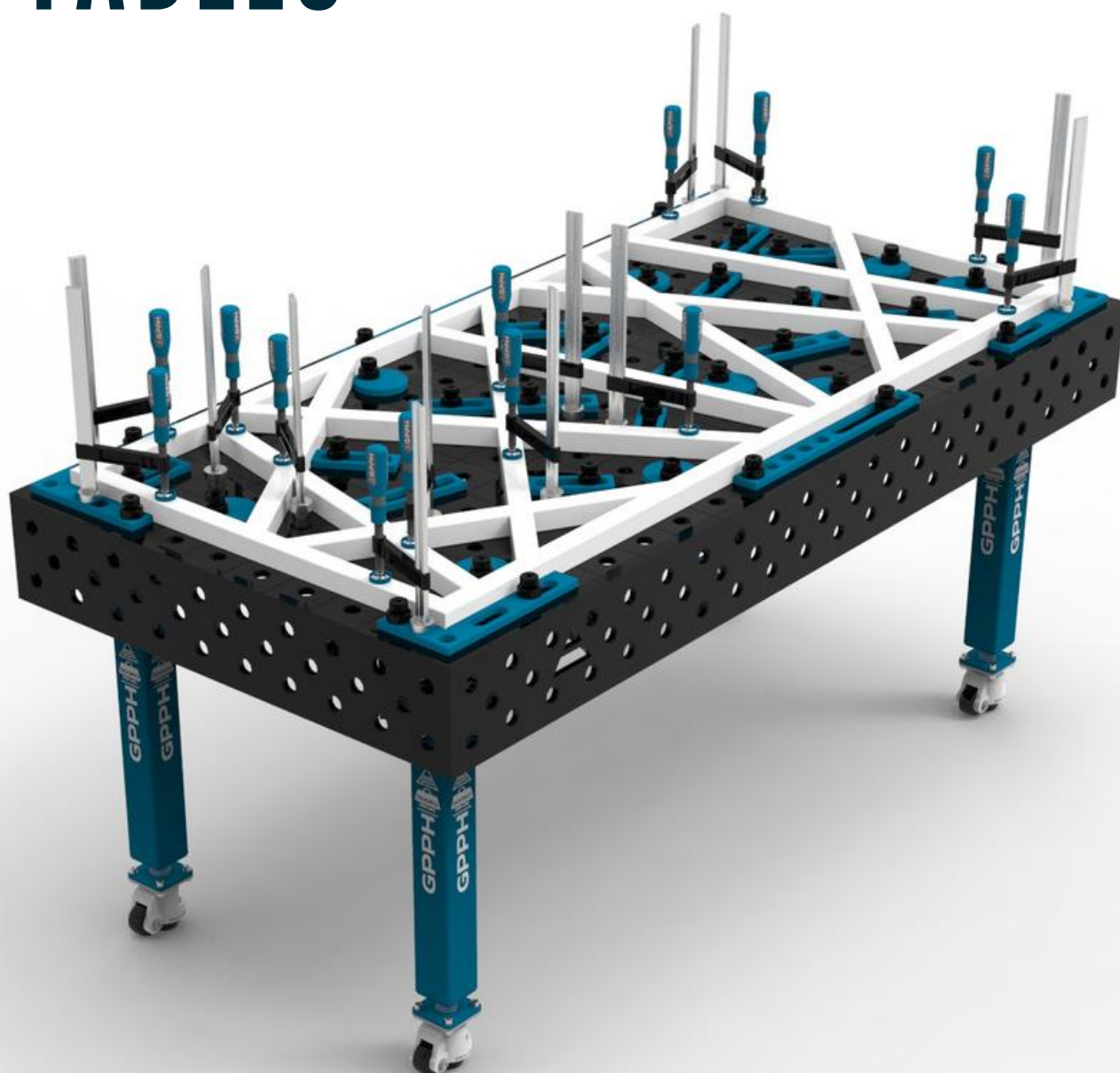


## GPPH TRADITIONAL WELDING TABLE<sup>PRO</sup> TWT.PRO.10060

- length x width: 1000x600mm
- side plate: 200mm
- table weight: approx. 210 kg
- capacity: 2 800 kg
- number of legs: 4



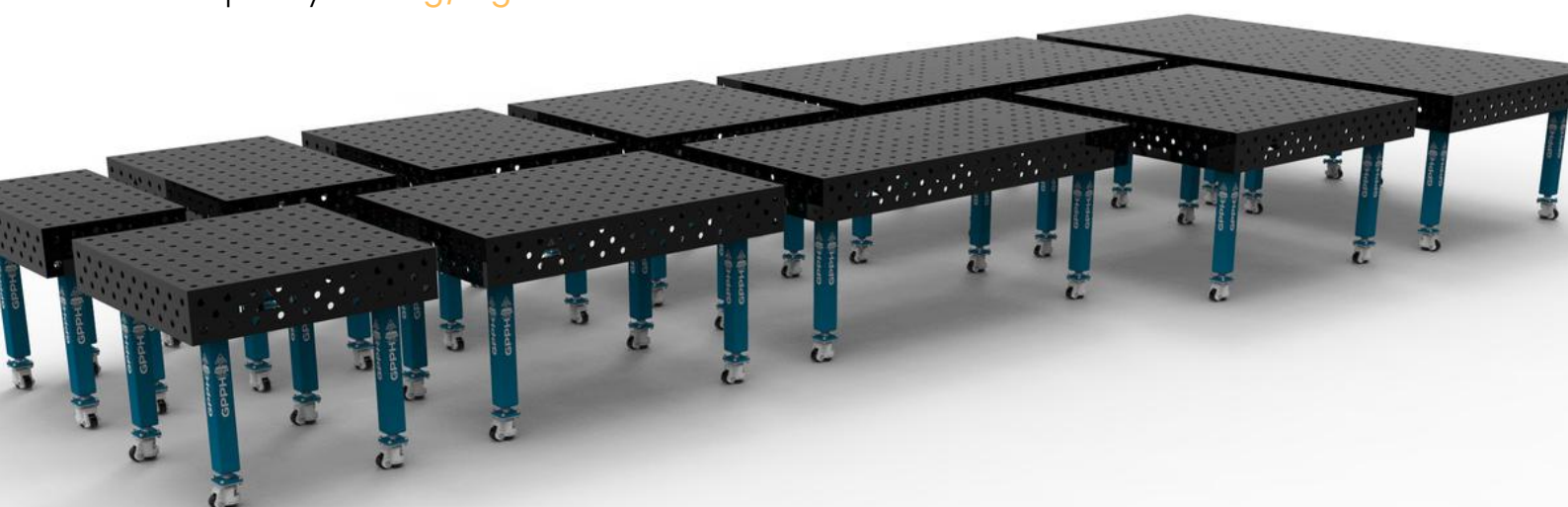
# GPPH TRADITIONAL WELDING TABLES<sup>PLUS</sup>





## TECHNICAL PARAMETERS

- ✓ Stable and massive construction
- ✓ The highest quality of workmanship
- ✓ Perfect flatness of the table [ + / - 0,5mm ]
- ✓ Made of S355J2+N
- ✓ Holes of system  $\varnothing 16$  or  $\varnothing 28$  in the grid 100x100
- ✓ Three grids of holes on the 4 sides
- ✓ Chamfered and milled holes for easy tool assembly
- ✓ Engraved scale in the grid 100x100mm
- ✓ Height adjustment of the table with standard legs approx. 880-930mm
- ✓ Possibility of using stainless steel covers
- ✓ Tables can be combined freely to extend a working surface
- ✓ All tables are reinforced with ribs
- ✓ Produced with standard ISO 2768-1
- ✗ Milled worktop edges
  - Thickness 12mm
  - Table legs made of profile 80x80mm
  - Capacity: 500kg/leg\*



\*Applies to standard legs on the foot. When it comes to legs on wheels, it is the static load capacity - it refers to the situation where the table is supported on the feet protruding from the wheels.



# DIMENSIONS OF TRADITIONAL WELDING TABLES<sup>PLUS</sup>



## GPPH TRADITIONAL WELDING TABLE<sup>PLUS</sup> TWT.PLUS.300148

- length x width: 3000x1480mm
- side plate: 200mm
- table weight: approx. 780 kg
- capacity: 4 000 kg
- number of legs: 8



## GPPH TRADITIONAL WELDING TABLE<sup>PLUS</sup> TWT.PLUS.240120

- length x width: 2400x1200mm
- side plate: 200mm
- table weight: approx. 510 kg
- capacity: 3 000 kg
- number of legs: 6



# DIMENSIONS OF TRADITIONAL WELDING TABLES<sup>PLUS</sup>



## GPPH TRADITIONAL WELDING TABLE<sup>PLUS</sup> TWT.PLUS.200100

- length x width: 2000x1000mm
- side plate: 200mm
- table weight: approx. 370 kg
- capacity: 2 000 kg
- number of legs: 4



## GPPH TRADITIONAL WELDING TABLE<sup>PLUS</sup> TWT.PLUS.150148

- length x width: 1500x1480mm
- side plate: 200mm
- table weight: approx. 390 kg
- capacity: 2 000 kg
- number of legs: 4



# DIMENSIONS OF TRADITIONAL WELDING TABLES<sup>PLUS</sup>



## GPPH TRADITIONAL WELDING TABLE<sup>PLUS</sup> TWT.PLUS.150100

- length x width: 1500x1000mm
- side plate: 200mm
- table weight: approx. 300 kg
- capacity: 2 000 kg
- number of legs: 4



## GPPH TRADITIONAL WELDING TABLE<sup>PLUS</sup> TWT.PLUS.120120

- length x width: 1200x1200mm
- side plate: 200mm
- table weight: approx. 280 kg
- capacity: 2 000 kg
- number of legs: 4





# DIMENSIONS OF TRADITIONAL WELDING TABLES<sup>PLUS</sup>



## GPPH TRADITIONAL WELDING TABLE<sup>PLUS</sup> TWT.PLUS.120100

- length x width: 1200x1000mm
- side plate: 200mm
- table weight: approx. 260 kg
- capacity: 2 000 kg
- number of legs: 4



## GPPH TRADITIONAL WELDING TABLE<sup>PLUS</sup> TWT.PLUS.12080

- length x width: 1200x800mm
- side plate: 200mm
- table weight: approx. 220 kg
- capacity: 2 000 kg
- number of legs: 4



# DIMENSIONS OF TRADITIONAL WELDING TABLES<sup>PLUS</sup>



## GPPH TRADITIONAL WELDING TABLE<sup>PLUS</sup> TWT.PLUS.100100

- length x width: 1000x1000mm
- side plate: 200mm
- table weight: approx. 230 kg
- capacity: 2 000 kg
- number of legs: 4

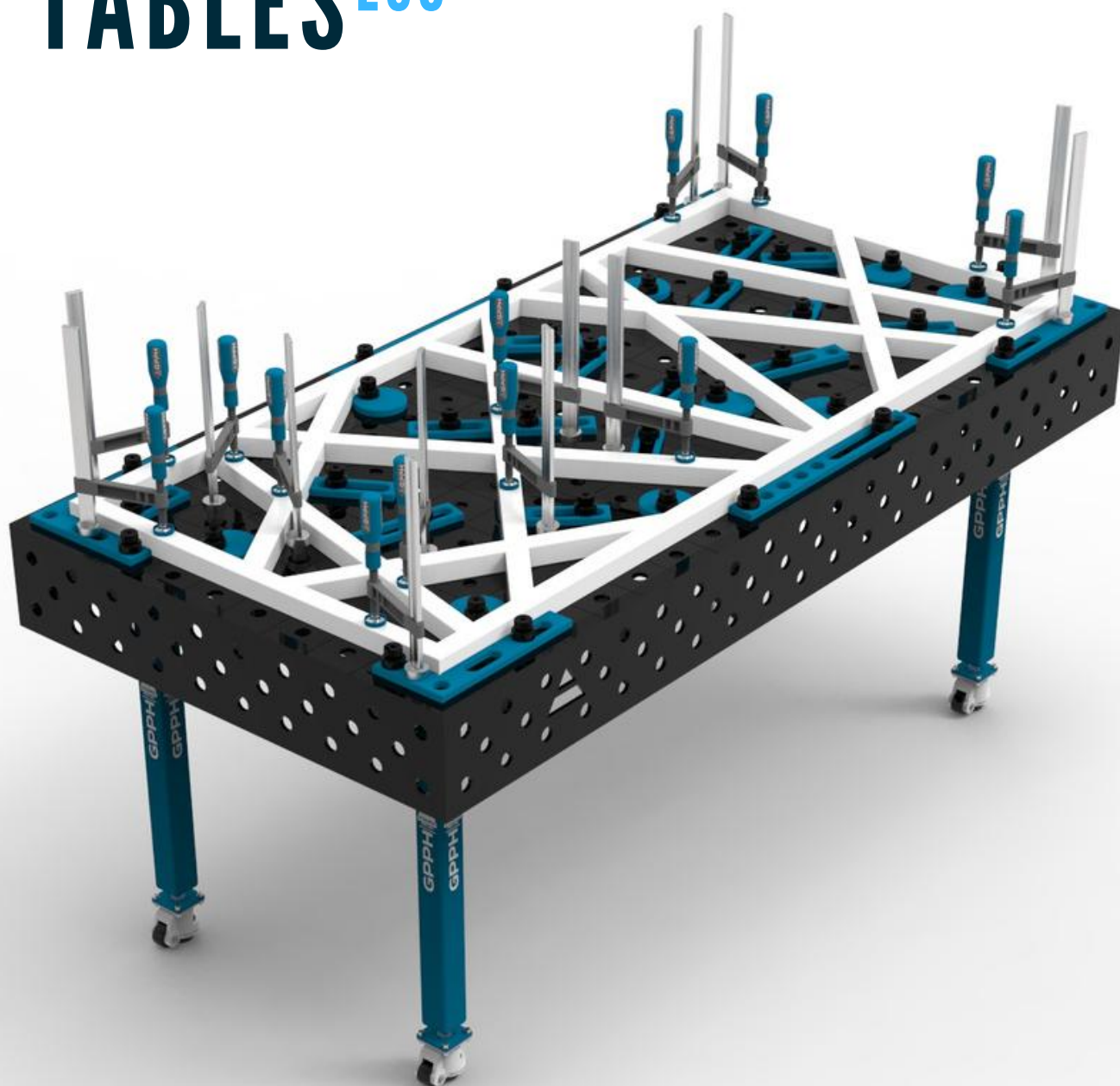


## GPPH TRADITIONAL WELDING TABLE<sup>PLUS</sup> TWT.PLUS.10060

- length x width: 1000x600mm
- side plate: 200mm
- table weight: approx. 170 kg
- capacity: 2 000 kg
- number of legs: 4

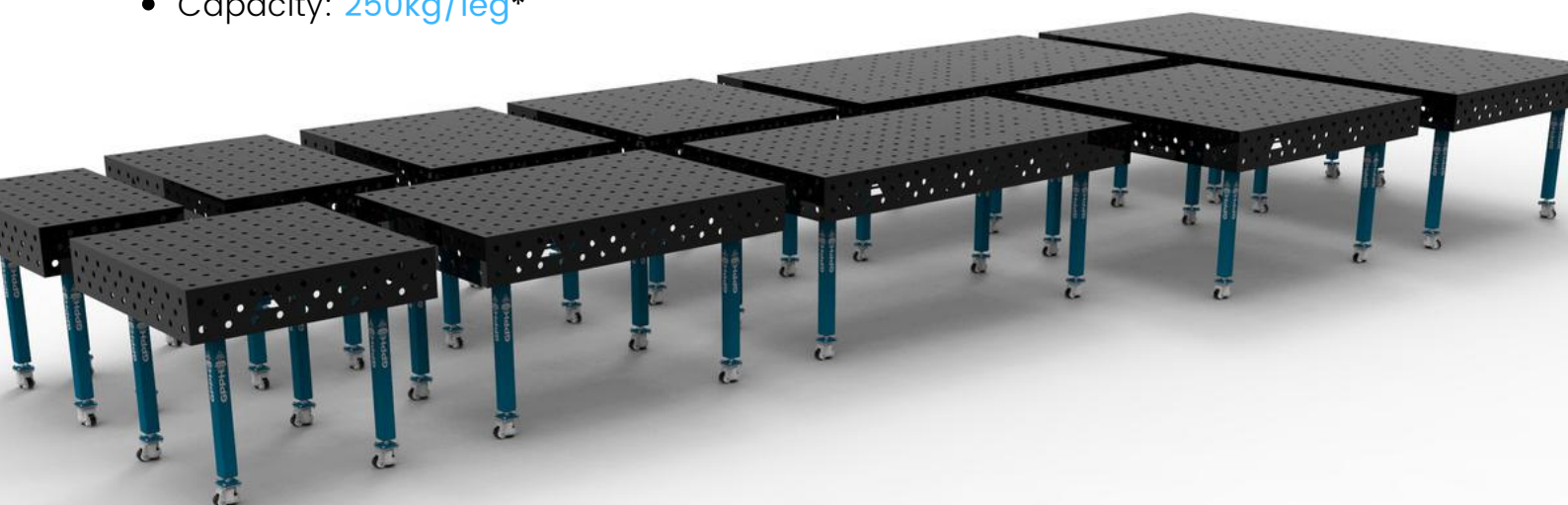


# GPPH TRADITIONAL WELDING TABLES<sup>ECO</sup>



## TECHNICAL PARAMETERS

- ✓ Stable and massive construction
- ✓ The highest quality of workmanship
- ✓ Perfect flatness of the table [ +/ - 0,5mm]
- ✓ Made of S355J2+N
- ✓ Holes of system ø16 or ø28 in the grid 100x100
- ✓ Three grids of holes on the 4 sides
- ✗ Chamfered and milled holes to facilitate the assembly of tools (holes in the basic ECO version are laser cut)
- ✓ Engraved scale in the grid 100x100mm
- ✓ Height adjustment of the table with standard legs approx. 880-930mm
- ✓ Possibility of using stainless steel covers
- ✓ Tables can be combined freely to extend a working surface
- ✓ All tables are reinforced with ribs
- ✓ Produced with standard ISO 2768-1
- ✗ Milled worktop edges
- Thickness **8mm**
- Table legs made of profile **60x60mm**
- Capacity: **250kg/leg\***



\*Applies to standard legs on the foot. When it comes to legs on wheels, it is the static load capacity - it refers to the situation where the table is supported on the feet protruding from the wheels.





# DIMENSIONS OF TRADITIONAL WELDING TABLES<sup>ECO</sup>



## GPPH TRADITIONAL WELDING TABLE<sup>ECO</sup> TWT.ECO.300148

- length x width: 3000x1480mm
- side plate: 200 mm
- table weight: approx. 530 kg
- capacity: 2 000 kg
- number of legs: 8



## GPPH TRADITIONAL WELDING TABLE<sup>ECO</sup> TWT.ECO.240120

- length x width: 2400x1200mm
- side plate: 200 mm
- table weight: approx. 340 kg
- capacity: 1 500 kg
- number of legs: 6



# DIMENSIONS OF TRADITIONAL WELDING TABLES<sup>ECO</sup>



**GPPH TRADITIONAL  
WELDING TABLE<sup>ECO</sup>  
TWT.ECO.200100**

- length x width: 2000x1000mm
- side plate: 200 mm
- table weight: approx. 250 kg
- capacity: 1 000 kg
- number of legs: 4



**GPPH TRADITIONAL  
WELDING TABLE<sup>ECO</sup>  
TWT.ECO.150148**

- length x width: 1500x1480mm
- side plate: 200 mm
- table weight: approx. 270 kg
- capacity: 1 000 kg
- number of legs: 4



# DIMENSIONS OF TRADITIONAL WELDING TABLES<sup>ECO</sup>



## GPPH TRADITIONAL WELDING TABLE<sup>ECO</sup> TWT.ECO.150100

- length x width: 1500x1000mm
- side plate: 200 mm
- table weight: approx. 200 kg
- capacity: 1 000 kg
- number of legs: 4



## GPPH TRADITIONAL WELDING TABLE<sup>ECO</sup> TWT.ECO.120120

- length x width: 1200x1200mm
- side plate: 200 mm
- table weight: approx. 190 kg
- capacity: 1 000 kg
- number of legs: 4



# DIMENSIONS OF TRADITIONAL WELDING TABLES<sup>ECO</sup>



## GPPH TRADITIONAL WELDING TABLE<sup>ECO</sup> TWT.ECO.120100

- length x width: 1200x1000mm
- side plate: 200 mm
- table weight: approx. 170 kg
- capacity: 1 000 kg
- number of legs: 4



## GPPH TRADITIONAL WELDING TABLE<sup>ECO</sup> TWT.ECO.12080

- length x width: 1200x800mm
- side plate: 200 mm
- table weight: approx. 140 kg
- capacity: 1 000 kg
- number of legs: 4





# DIMENSIONS OF TRADITIONAL WELDING TABLES<sup>ECO</sup>



## GPPH TRADITIONAL WELDING TABLE<sup>ECO</sup> TWT.ECO.100100

- length x width: 1000x1000mm
- side plate: 200 mm
- table weight: approx. 150 kg
- capacity: 1 000 kg
- number of legs: 4



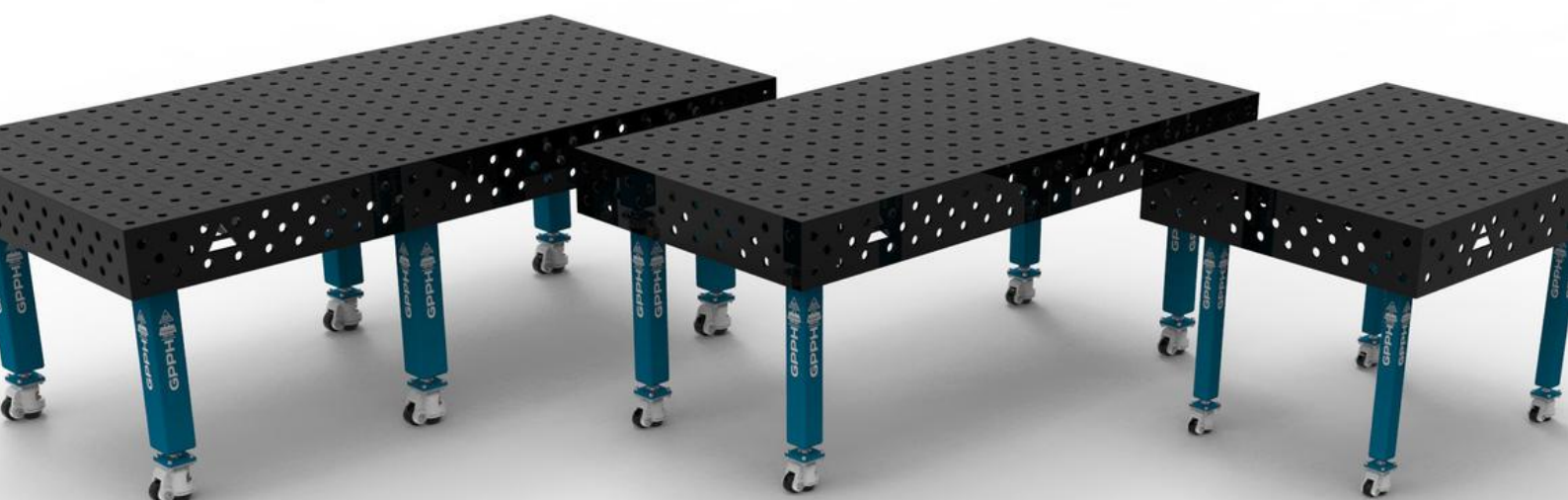
## GPPH TRADITIONAL WELDING TABLE<sup>ECO</sup> TWT.ECO.10060

- length x width: 1000x600mm
- side plate: 200 mm
- table weight: approx. 110 kg
- capacity: 1 000 kg
- number of legs: 4



# NEED MORE MOBILITY OF YOUR WELDING TABLE?

CHECK OUT OUR OFFER OF WELDING TABLES  
ON LEGS WITH WHEELS!



# DO YOU WELD STAINLESS STEEL ELEMENTS AND STRUCTURES?

CHECK OUR OFFER OF STAINLESS STEEL COVERS  
FOR GPPH TRADITIONAL WELDING TABLES!

The covers are made of 1mm thick stainless steel.

Put a cover on the Traditional GPPH Welding Table to transform it into an ideal table for welding stainless steel.

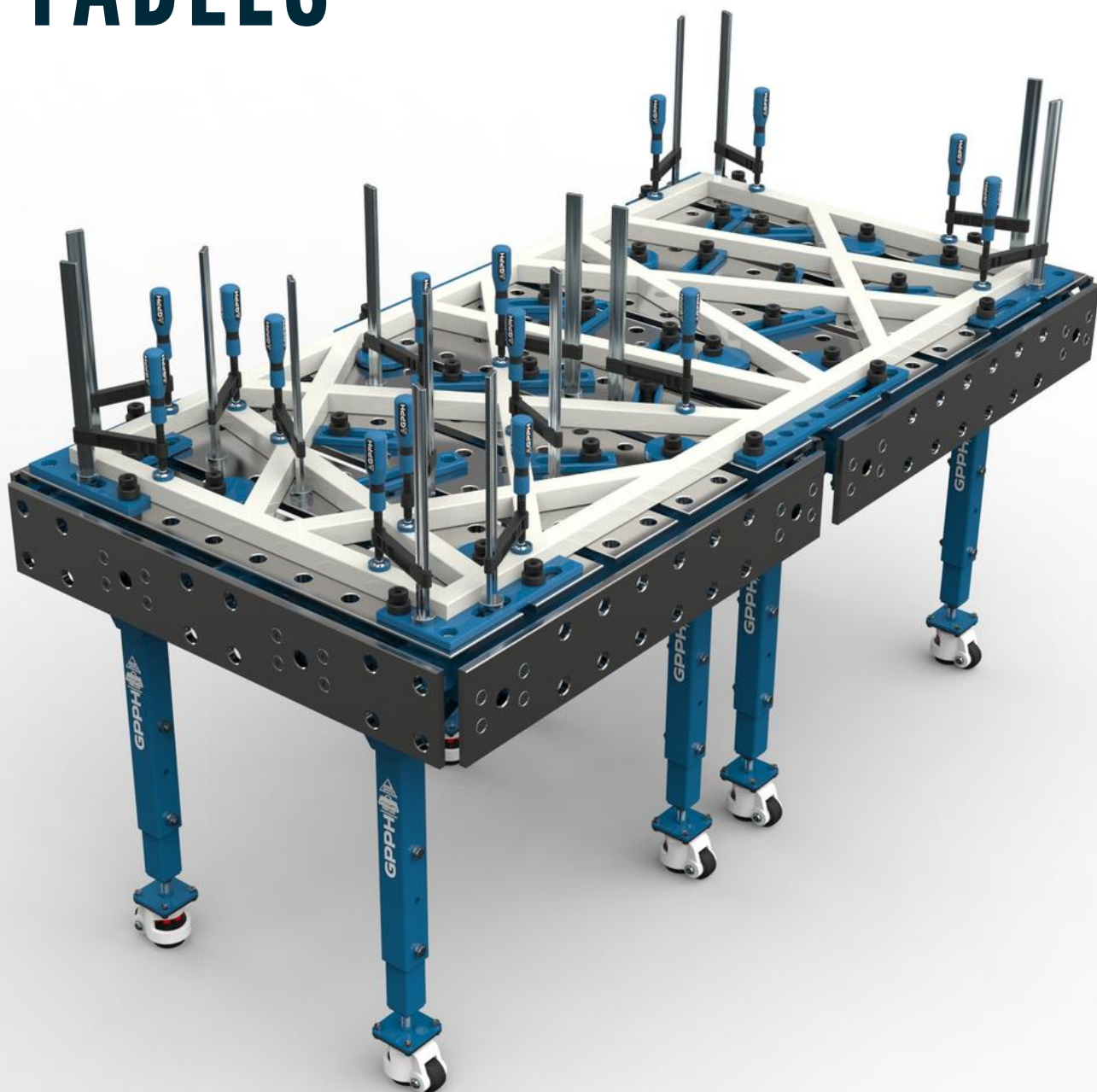
The hole pattern of the stainless steel cover is the same as the hole pattern of a Traditional Welding Table.



\*Valuation of the stainless steel cover only on request.

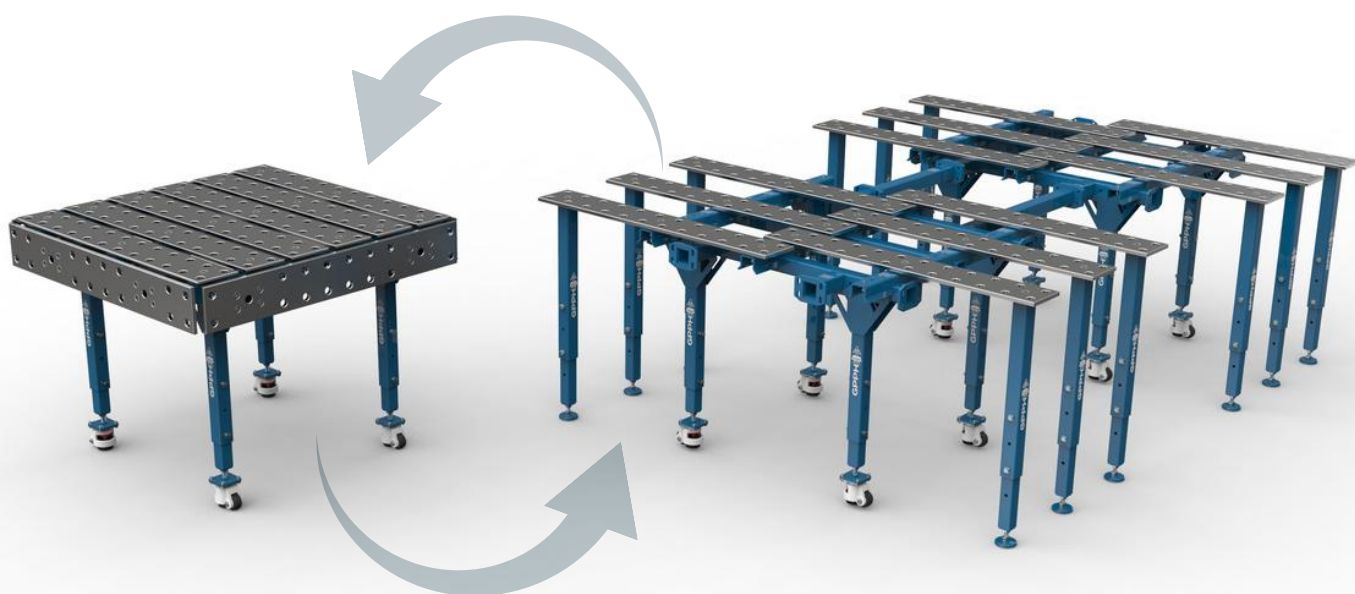


# GPPH MODULAR WELDING TABLES



## TECHNICAL PARAMETERS

- Stable construction
- The highest quality of workmanship
- Perfect flatness of the table due to the ability to adjust the Surface in three places
- Hole and slot possibility of tools installation
- Worktop made of S355J2+N
- Thickness 15mm
- Holes of system  $\varnothing 16$  or  $\varnothing 28$  in the grid 100x100
- Chamfered and milled holes for easy tool assembly
- Wheels with supports in standard leg
- Adjustable supports in additional legs, in staggered versions
- Adjustable table height in the range of 850mm – 1150mm, P=50mm
- Tables can be combined freely to extend a working surface
- Milled plate surface
- Set of side plates purchase option
- Produced with standard ISO 2768–1
- Capacity: 250kg/leg
- Tools from the PRO, PLUS, and ECO lines are also compatible with GPPH Modular Tables

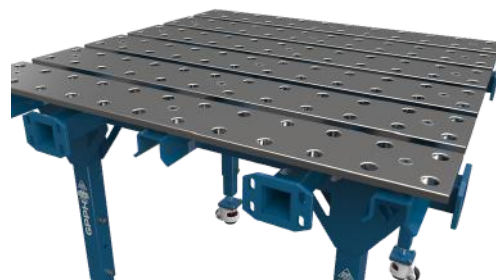




# ADVANTAGES AND BENEFITS OF MODULAR TABLES

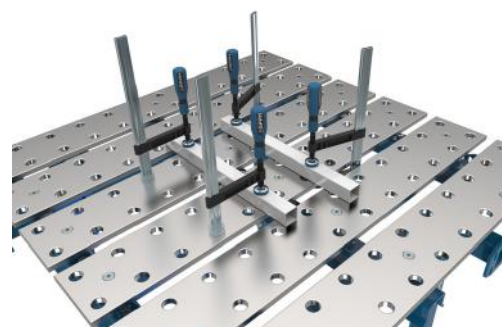
## PERFECT FLATNESS

Due to the possibility of adjusting the height of the countertops using spacers, the operator can set a perfect working surface of the table. This solution allows the user to use the table for many years while maintaining a perfect surface of the countertop.



## HOLE AND SLOT MOUNTING TOOLS

Ø28 holes are standard in the table in a 100x100mm grid. Besides, the design of our modular tables allows you to increase the number of places for mounting tools in the gaps between the top plates - increased ergonomics.



## ADJUSTABLE PLATES

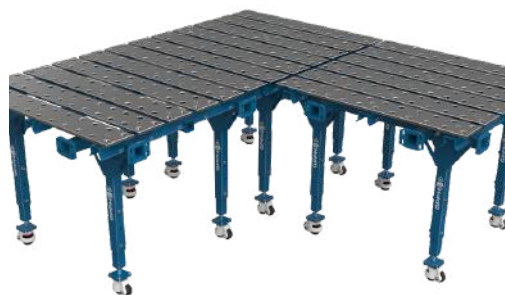
We can move them by increasing the working surface, as well as exchanging them for new ones, which affects the various adaptation of the table to the currently performed works and longevity of use.



# ADVANTAGES AND BENEFITS OF MODULAR TABLES

## INCREASING WORKING AREA

Done by sliding plates (as above), but above all, we obtain it by quickly joining together many tables in table set. The working area can be expanded in different directions. The operator can adjust the arrangement of tables depending on the current location in the production hall.



## ADJUSTABLE TABLE HEIGHT

Range from 850mm to 1150mm, every 50mm. The possibility of adapting the station to your needs, which affects the ergonomics of work for many operators.



## FLEXIBILITY OF THE NUMBER OF WELDING STATIONS

A variety of configurations, increasing the space by joining them, as well as increasing the number of positions by dividing them.



# DIMENSIONS AND TYPES OF GPPH MODULAR WELDING TABLES

## SINGLE TABLE

We offer three standard versions. They are ideal for smallscale production or serve as the basis for unlimited expansion of the surface of the welding station.

### DIMENSIONS | NET PRICE

- Table 1000x1000 [mm]
- Table 1200x1200 [mm]
- Table 1600x1500 [mm]



## UNFOLDABLE SINGLE TABLE

Each table from our offer can be unfolded thanks to sliding plates and the use of additional legs.

### DIMENSIONS | NET PRICE

- Table 1770x1000 [mm] (Table 1000x1000mm + 5x legs)
- Table 2170x1200 [mm] (Table 1200x1200mm + 6x legs)
- Table 2670x1600 [mm] (Table 1500x1600mm + 8x legs)



# DIMENSIONS AND TYPES OF GPPH MODULAR WELDING TABLES

## DOUBLE TABLE

The most popular sets are sets composed of two single tables. The design of the tables allows expansion in every direction.

### DIMENSIONS | NET PRICE

- Table 2000x1000 [mm] (2x Tables 1000x1000)
- Table 2400x1200 [mm] (2x Tables 1200x1200)
- Table 3200x1500 [mm] (2x Tables 1600x1500)



## KIT WITH A LARGE WORKING SURFACE

Connection of two unfolded tables by means of connectors are the perfect solution for the spatial construction.

### DIMENSIONS | NET PRICE

- Table 1770x2630 [mm]  
(2x Tables 1000x1000 + 2x connector L=630 mm + 10x legs)
- Table 2170x3030 [mm]  
(2x Tables 1200x1200 + 2x connector L=630 mm + 12x legs)
- Table 2670x4000 [mm]  
(2x Tables 1500x1600 + 2x connector L=800 mm + 16x legs)



# ADDITIONAL EQUIPMENT FOR MODULAR WELDING TABLE

---

## SET OF SIDE PLATES

---

For a table with

dimensions:

1000x1000 [mm]

1200x1200 [mm]

1500x1600 [mm]

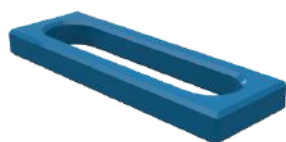




# ADDITIONAL EQUIPMENT FOR GPPH WELDING TABLES



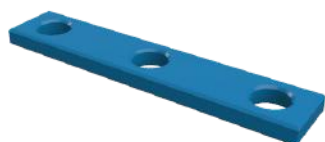
# FLAT TOOLS<sup>PRO</sup>



**STOP PRO 150**  
N.004PRO | Cat. No.



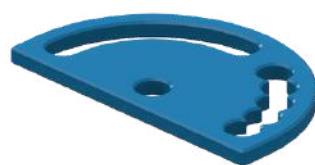
**STOP PRO 225**  
N.005PRO | Cat. No.



**STOP PRO 260**  
N.006PRO | Cat. No.



**STOP PRO 500**  
N.007PRO | Cat. No.



**PROTRACTOR PRO**  
N.008PRO | Cat. No.



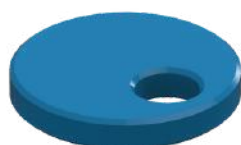
**ANGLE PRECISION  
SQUARE (FLAT)  
PRO 275X150**  
N.009PRO | Cat. No.



**ANGLE PRECISION  
SQUARE (FLAT)  
PRO 320X150**  
N.010PRO | Cat. No.



**ANGLE PRECISION  
SQUARE (FLAT)  
PRO 350X250**  
N.011PRO | Cat. No.



**ECCENTRIC STOP  
PRO Ø100**  
N.003PRO | Cat. No.



# SPATIAL TOOLS<sup>PRO</sup>



**ANGLE BRACKET  
PRO 185X175**  
N.012PRO | Cat. No.



**ANGLE BRACKET  
PRO 200X200**  
N.0013PRO | Cat. No.



**ANGLE BRACKET  
PRO 300X190**  
N.014PRO | Cat. No.



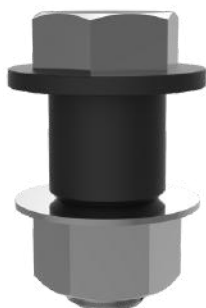
**ANGLE BRACKET  
PRO 450X250**  
N.015PRO | Cat. No.



**ANGLE BRACKET PRO**  
**275X500X175X100**  
N.016PRO | Cat. No.



# ASSEMBLY TOOLS <sup>PRO</sup>



## MOUNTING PIN PRO

T.015PRO | Cat. No.

The PRO mounting pin allows seamless connection of the PRO Welding Tables and therefore increasing their working surface.



## FAST ASSEMBLY BOLT 30 PRO

N.002PRO | Cat. No.

The 30 PRO fast assembly bolt is suited for mounting PRO tools on a PRO Welding Table.



## FAST ASSEMBLY BOLT UNI

N.002UNI | Cat. No.

The UNI fast assembly bolt is the most universal. Thanks to it, you can, for example, mount tools from the ECO series on the Welding Table from the PRO series.



## INCREASING THE WORK SURFACE<sup>PRO</sup>

---

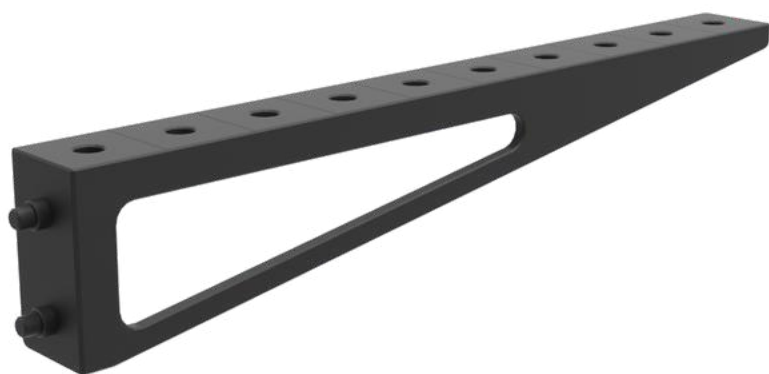


TABLE EXTENSION PRO

1000X100

N.017PRO | Cat. No.

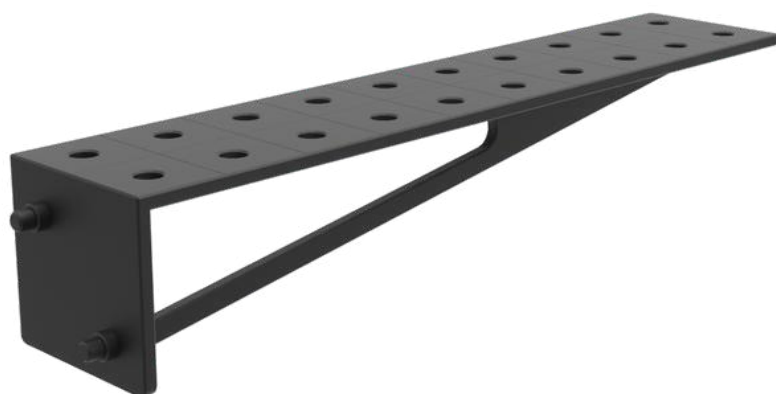


TABLE EXTENSION PRO

1000X200

N.018PRO | Cat. No.



WELDING CONNECTION

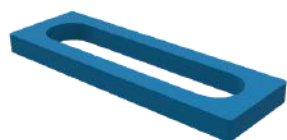
BLOCK PRO 1000X200X200

N.019PRO | Cat. No.





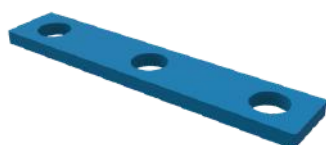
# FLAT TOOLS<sup>PLUS</sup>



**STOP PLUS 150**  
N.004PLUS | Cat. No.



**STOP PLUS 225**  
N.005PLUS | Cat. No.



**STOP PLUS 260**  
N.006PLUS | Cat. No.



**STOP PLUS 500**  
N.007PLUS | Cat. No.



**PROTRACTOR PLUS**  
N.008PLUS | Cat. No.



**ANGLE PRECISION  
SQUARE (FLAT)  
PLUS 275X150**  
N.009PLUS | Cat. No.



**ANGLE PRECISION  
SQUARE (FLAT)  
PLUS 320X150**  
N.010PLUS | Cat. No.



**ANGLE PRECISION  
SQUARE (FLAT)  
PLUS 350X250**  
N.011PLUS | Cat. No.



**ECCENTRIC STOP  
PLUS Ø100**  
N.003PLUS | Cat. No.



# SPATIAL TOOLS PLUS



**ANGLE BRACKET  
PLUS 185X175**  
N.012PLUS | Cat. No.



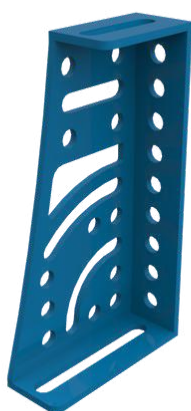
**ANGLE BRACKET  
PLUS 200X200**  
N.013PLUS | Cat. No.



**ANGLE BRACKET  
PLUS 300X190**  
N.014PLUS | Cat. No.



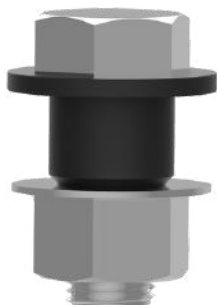
**ANGLE BRACKET  
PLUS 450X250**  
N.015PLUS | Cat. No.



**ANGLE BRACKET PLUS**  
**275X500X175X100**  
N.016PLUS | Cat. No.



## ASSEMBLY TOOLS <sup>PLUS</sup>



### MOUNTING PIN PLUS

T.015PLUS | Cat. No.

The PLUS mounting pin allows seamless connection of the PLUS Welding Tables and therefore increasing their working surface.



### FAST ASSEMBLY BOLT 23 PLUS

N.002PLUS | Cat. No.

The 23 PLUS fast assembly bolt is suited for mounting PLUS tools on a PLUS Welding Table.



### FAST ASSEMBLY BOLT UNI

N.002UNI | Cat. No.

The UNI fast assembly bolt is the most universal. Thanks to it, you can, for example, mount tools from the ECO series on the Welding Table from the PLUS series.



## INCREASING THE WORK SURFACE<sup>PLUS</sup>

---

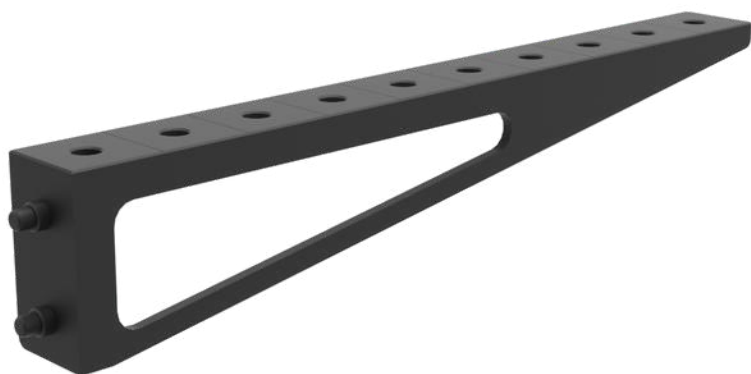
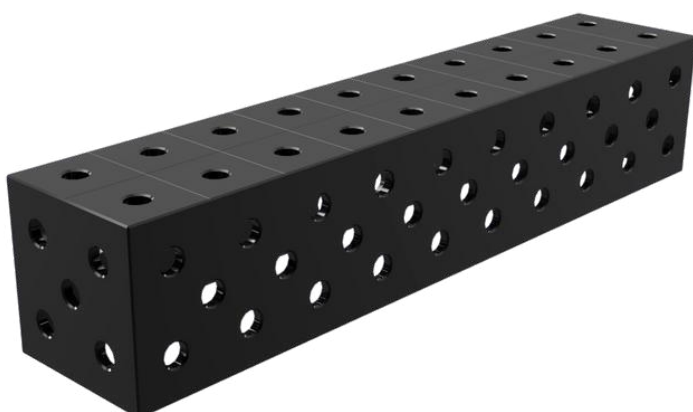


TABLE EXTENSION PLUS  
1000X100  
N.017PLUS | Cat. No.



TABLE EXTENSION PLUS  
1000X200  
N.018PLUS | Cat. No.



WELDING CONNECTION  
BLOCK PLUS 1000X200X200  
N.019PLUS | Cat. No.



# FLAT TOOLS<sup>ECO</sup>



**STOP ECO 150**  
N.004ECO | Cat. No.



**STOP ECO 225**  
N.005ECO | Cat. No.



**STOP ECO 260**  
N.006ECO | Cat. No.



**STOP ECO 500**  
N.007ECO | Cat. No.



**PROTRACTOR ECO**  
N.008ECO | Cat. No.



**ANGLE PRECISION  
SQUARE (FLAT)  
ECO 275X150**  
N.009ECO | Cat. No.



**ANGLE PRECISION  
SQUARE (FLAT)  
ECO 320X150**  
N.010ECO | Cat. No.



**ANGLE PRECISION  
SQUARE (FLAT)  
ECO 350X250**  
N.011ECO | Cat. No.



**ECCENTRIC STOP  
ECO Ø100**  
N.003ECO | Cat. No.





# SPATIAL TOOLS<sup>ECO</sup>



**ANGLE BRACKET  
ECO 185X175**  
N.012ECO | Cat. No.



**ANGLE BRACKET  
200X200**  
N.013ECO | Cat. No.



**ANGLE BRACKET  
ECO 300X190**  
N.014ECO | Cat. No.



**ANGLE BRACKET  
ECO 450X250**  
N.015ECO | Cat. No.



**ANGLE BRACKET ECO  
275X500X175X100**  
N.016ECO | Cat. No.



## ASSEMBLY TOOLS<sup>ECO</sup>



### MOUNTING PIN ECO

T.015ECO | Cat. No.

The ECO mounting pin allows seamless connection of the ECO Welding Tables and therefore increasing their working surface.



### FAST ASSEMBLY BOLT 16 ECO

N.002ECO | Cat. No.

The 16 ECO fast assembly bolt is suited for mounting PRO tools on a ECO Welding Table.



### FAST ASSEMBLY BOLT UNI

N.002UNI | Cat. No.

The UNI fast assembly bolt is the most universal. Thanks to it, you can, for example, mount tools from the PRO series on the Welding Table from the ECO series.



## INCREASING THE WORK SURFACE<sup>ECO</sup>

---

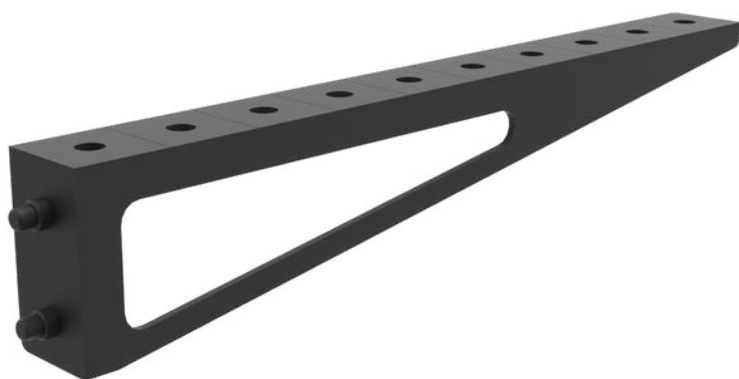


TABLE EXTENSION ECO  
1000X100  
N.017ECO | Cat. No.

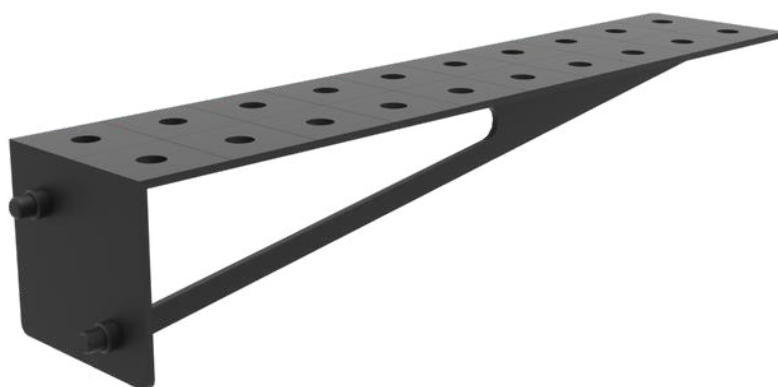
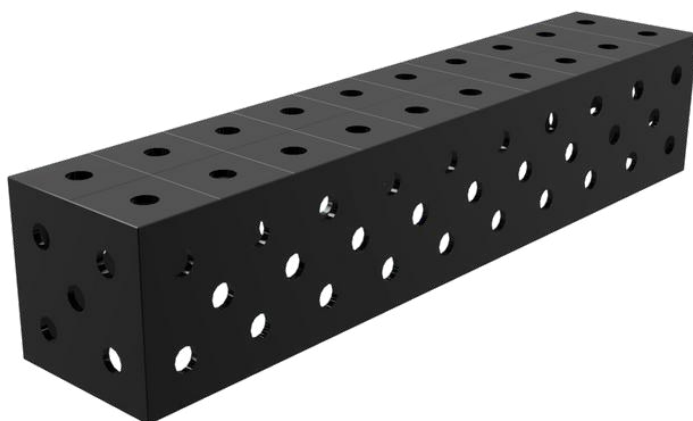


TABLE EXTENSION ECO  
1000X200  
N.018ECO | Cat. No.



WELDING CONNECTION  
BLOCK ECO 1000X200X200  
N.019ECO | Cat. No.



# FASTENING CLAMPS



**FASTENING CLAMP**  
N.001A | Cat. No.



**FASTENING CLAMP  
WITH LEVER**  
N.001B | Cat. No.



**VARIABLE THROAT  
DEPTH CLAMP**  
N.001C | Cat. No.



**VARIABLE THROAT  
DEPTH WITH  
LEVER CLAMP**  
N.001D | Cat. No.



**FASTENING CLAMP**  
N.001E | Cat. No.



**FASTENING CLAMP  
WITH LEVER**  
N.001F | Cat. No.



# FASTENING CLAMPS



**BESSEY SCREW CLAMP**  
(WORKING RANGE  
200MM)  
N.001G | Cat. No.



**BESSEY SCREW CLAMP**  
(WORKING RANGE  
300MM)  
N.001H | Cat. No.



**BESSEY SCREW CLAMP**  
(WORKING RANGE  
600MM)  
N.001I | Cat. No.



**BESSEY LEVER CLAMP**  
(WORKING RANGE  
200MM)  
N.001J | Cat. No.



**BESSEY LEVER CLAMP**  
(WORKING RANGE  
300MM)  
N.001K | Cat. No.



**BESSEY HIGH-PERFORMANCE  
SCREW CLAMP (WORKING  
RANGE 300MM)**  
N.001L | Cat. No.





## FASTENING CLAMPS



**BESSEY HIGH-PERFORMANCE  
SCREW CLAMP (WORKING  
RANGE 500MM)**

N.001M | Cat. No.



**BESSEY CLAMPING ELEMENT  
FOR WELDING TABLES WITH  
SPECIALS PRESSURE PLATE**

N.001N | Cat. No.



**BESSEY CLAMPING ELEMENT  
FOR WELDING TABLES WITH  
GRIPPING ARM**

N.001O | Cat. No.



**VERTICAL  
CLAMP WITH OPEN  
ARM 330/A**

N.001P | Cat. No.



**VERTICAL  
CLAMP WITH OPEN  
ARM 230/A**

N.001R | Cat. No.



**BESSEY TILTING  
ADAPTER**

N.001S | Cat. No.



## ANGLE CLAMPS, PRISMS



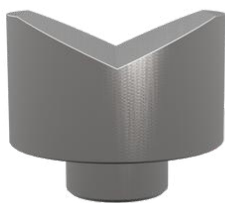
**BESSEY WELDING ANGLE  
CLAMP (WORKING  
RANGE 2X90MM)**  
N.024A | Cat. No.



**BESSEY WELDING ANGLE  
CLAMP (WORKING RANGE  
2X120MM)**  
N.024B | Cat. No.



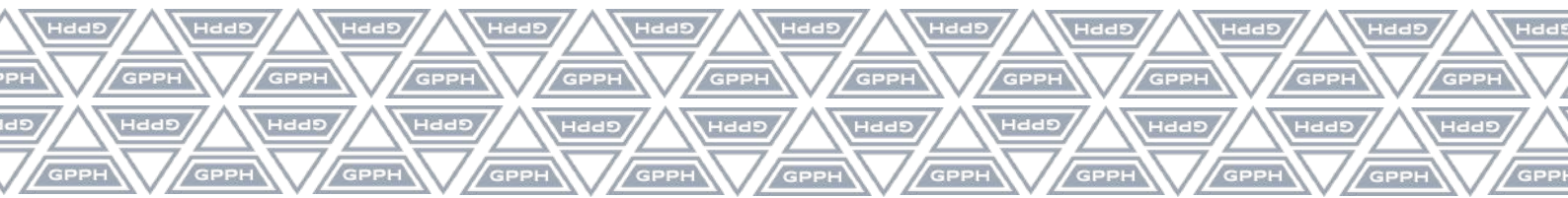
**BESSEY WELDING  
CLAMP SET**  
N.024C | Cat. No.



**PRISM**  
**Ø58mm 130°**  
N.021 | Cat. No.



**PRISM**  
**Ø58mm 130°/ 90°**  
N.023 | Cat. No.



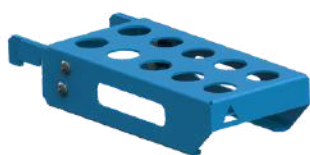
# PRISMS, WELDING TORCH HANDLE, TOOL SHELVES



**PRISM**  
**Ø58mm 90°**  
 N.022 | Cat. No.



**WELDING TORCH**  
**HANDLE**  
 N.020 | Cat. No.



**FAST ASSEMBLY**  
**BOLT SHELF S**  
 T.011A | Cat. No.



**FAST ASSEMBLY**  
**BOLT SHELF M**  
 T.011B | Cat. No.



**CLAMP SHELF S**  
 T.011C | Cat. No.



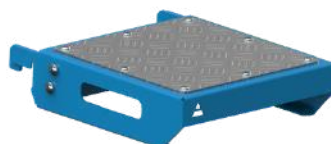
**CLAMP SHELF M**  
 T.011D | Cat. No.



# TOOL SHELVES



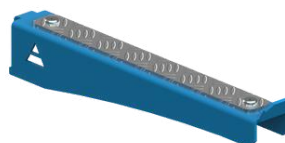
**FLAT SHELF S**  
T.011E | Cat. No.



**FLAT SHELF M**  
T.011F | Cat. No.



**FLAT SHELF L**  
T.011G | Cat. No.



**MOBILE SHELF  
FOR EXTENSIONS**  
T.011J | Cat. No.



**MIX SHELF**  
T.011H | Cat. No.



**DOCUMENTATION  
SHELF**  
T.011I | Cat. No.



# PROFESSIONAL CHEMICALS



**CONCENTRATED  
ANTI-SPATTER  
LIQUID BEST WELD 1L**  
T.013A | Cat. No.



**CONCENTRATED  
ANTI-SPATTER  
LIQUID BEST WELD 5L**  
T.013B | Cat. No.



**CONCENTRATED  
DEGREASING AND  
CLEANING LIQUID  
BEST MAX 1L**  
T.013C | Cat. No.



**CONCENTRATED  
DEGREASING AND  
CLEANING LIQUID  
BEST MAX 5L**  
T.013D | Cat. No.

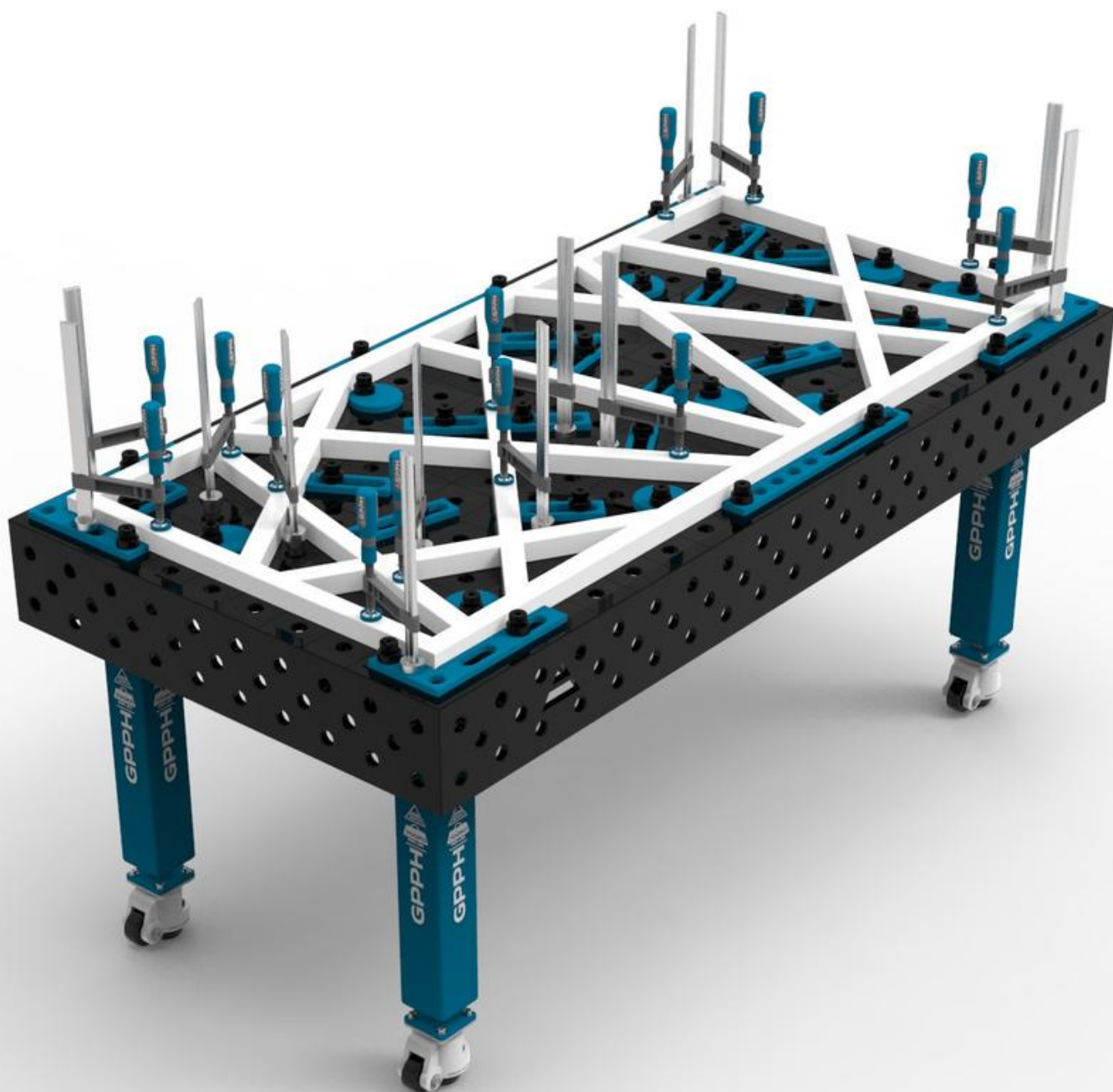


**SPRAYER**  
T.014 | Cat. No.





# TOOLKIT PROPOSAL FOR GPPH WELDING TABLES



# TOOLKIT<sup>PRO</sup> NO. 1

Number of jigs & fixtures included in the kit: 146



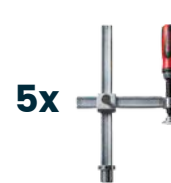
10x

FASTENING  
CLAMP  
N.001A



10x

FASTENING  
CLAMP  
WITH LEVER  
N.001B



5x

VARIABLE  
THROAT  
DEPTH CLAMP  
N.001C



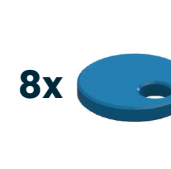
5x

VARIABLE  
THROAT DEPTH  
WITH LEVER  
CLAMP  
N.001D



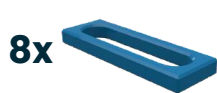
40x

FAST ASSEMBLY  
BOLT 30 PRO  
N.002PRO



8x

ECCENTRIC  
STOP PRO Ø100  
N.003PRO



8x

STOP PRO  
150  
N.004PRO



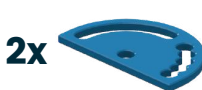
4x

STOP PRO  
225  
N.005PRO



4x

STOP PRO  
500  
N.007PRO



2x

PROTRACTOR  
PRO  
N.008PRO



4x

ANGLE PRECISION  
SQUARE (FLAT)  
PRO 320X150  
N.010PRO



2x

ANGLE PRECISION  
SQUARE (FLAT)  
PRO 350X250  
N.011PRO



8x

ANGLE BRACKET  
PRO 185X175  
N.012PRO



2x

ANGLE BRACKET  
PRO 200X200  
N.013PRO



4x

ANGLE BRACKET  
PRO 300X190  
N.014PRO



4x

ANGLE BRACKET  
PRO 450X250  
N.015PRO



2x

ANGLE BRACKET PRO  
270X500X175X100  
N.016PRO



2x

TABLE EXTENSION  
PRO 1000X100  
N.017PRO



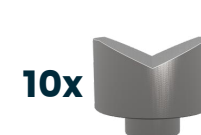
2x

TABLE EXTENSION  
PRO 1000X200  
N.018PRO



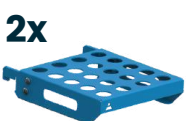
1x

WELDING TORCH  
HANDLE  
N.020



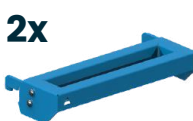
10x

PRISM  
Ø58MM 130°  
N.021



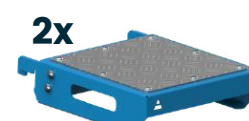
2x

FAST ASSEMBLY  
BOLT SHELF M  
T.011B



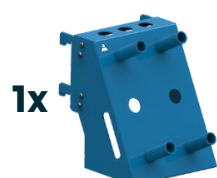
2x

CLAMP SHELF M  
T.011D



2x

FLAT SHELF M  
T.011F



1x

MIX SHELF  
T.011H



1x

DOCUMENTATION  
SHELF  
T.011I



1x

TOOL TROLLEY M /  
TOOL TROLLEY L  
(OPTIONS)  
T.012B / T.012A

# TOOLKIT<sup>PRO</sup> NO. 2

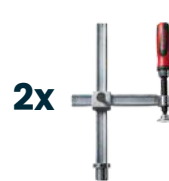
Number of jigs & fixtures included in the kit: 96



**8x** FASTENING CLAMP  
N.001A



**4x** FASTENING CLAMP WITH LEVER  
N.001B



**2x** VARIABLE THROAT DEPTH CLAMP  
N.001C



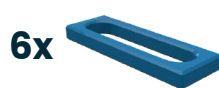
**2x** VARIABLE THROAT DEPTH WITH LEVER CLAMP  
N.001D



**30x** FAST ASSEMBLY BOLT 30 PRO  
N.002PRO



**6x** ECCENTRIC STOP PRO Ø100  
N.003PRO



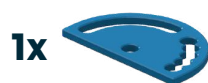
**6x** STOP PRO 150  
N.004PRO



**4x** STOP PRO 225  
N.005PRO



**2x** STOP PRO 500  
N.007PRO



**1x** PROTRACTOR PRO  
N.008PRO



**4x** ANGLE PRECISION SQUARE (FLAT) PRO 320X150  
N.010PRO



**2x** ANGLE PRECISION SQUARE (FLAT) PRO 350X250  
N.011PRO



**4x** ANGLE BRACKET PRO 185X175  
N.012PRO



**2x** ANGLE BRACKET PRO 200X200  
N.013PRO



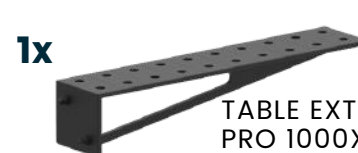
**2x** ANGLE BRACKET PRO 300X190  
N.014PRO



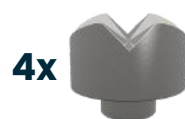
**2x** ANGLE BRACKET PRO 450X250  
N.015PRO



**1x** TABLE EXTENSION PRO 1000X100  
N.017PRO



**1x** TABLE EXTENSION PRO 1000X200  
N.018PRO



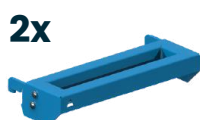
**4x** PRISM Ø58MM 130°/90°  
N.023



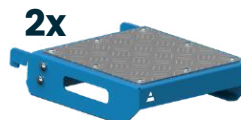
**1x** WELDING TORCH HANDLE  
N.020



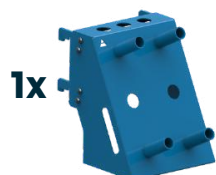
**2x** FAST ASSEMBLY BOLT SHELF M  
T.011B



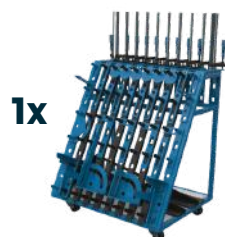
**2x** CLAMP SHELF M  
T.011D



**2x** FLATSHELF M  
T.011F



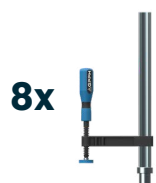
**1x** MIX SHELF  
T.011H



**1x** TOOL TROLLEY M / TOOL TROLLEY L (OPTIONS)  
T.012B / T.012A

# TOOLKIT<sup>PRO</sup> NO. 3

Number of jigs & fixtures included in the kit: 60



8x

FASTENING  
CLAMP  
N.001A



2x

FASTENING  
CLAMP  
WITH LEVER  
N.001B



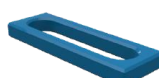
18x

FAST ASSEMBLY  
BOLT 30 PRO  
N.002PRO



4x

ECENTRIC  
STOP PRO Ø100  
N.003PRO



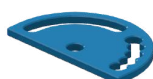
4x

STOP PRO  
150  
N.004PRO



4x

STOP PRO  
225  
N.005PRO



1x

PROTRACTOR  
PRO  
N.008PRO



2x

ANGLE PRECISION  
SQUARE (FLAT)  
PRO 320X150  
N.010PRO



2x

ANGLE PRECISION  
SQUARE (FLAT)  
PRO 350X250  
N.011PRO



4x

ANGLE BRACKET  
PRO 185X175  
N.012PRO



2x

ANGLE BRACKET  
PRO 200X200  
N.013PRO



2x

ANGLE BRACKET  
PRO 300X190  
N.014PRO



1x

ANGLE BRACKET  
PRO 450X250  
N.015PRO



2x

PRISM Ø58MM  
130°/90°  
N.023



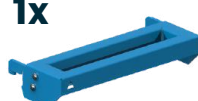
1x

WELDING TORCH  
HANDLE  
N.020



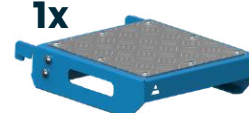
1x

FAST ASSEMBLY  
BOLT SHELF M  
T.011B



1x

CLAMP SHELF M  
T.011D



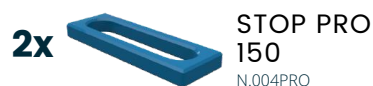
1x

FLATSHELF M  
T.011F

# TOOLKIT<sup>PRO</sup> NO. 4

Net price of toolkit PRO no. 4: 1 031 €

Number of jigs & fixtures included in the kit: 28





# TOOLKIT<sup>PLUS</sup> NO. 1

Number of jigs & fixtures included in the kit: 146



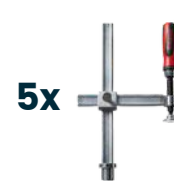
10x

FASTENING  
CLAMP  
N.001A



10x

FASTENING  
CLAMP  
WITH LEVER  
N.001B



5x

VARIABLE  
THROAT  
DEPTH CLAMP  
N.001C



5x

VARIABLE  
THROAT DEPTH  
WITH LEVER  
CLAMP  
N.001D



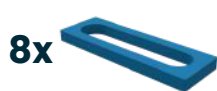
40x

FAST ASSEMBLY  
BOLT 23 PLUS  
N.002PLUS



8x

ECCENTRIC STOP  
PLUS Ø100  
N.003PLUS



8x

STOP PLUS  
150  
N.004PLUS



4x

STOP PLUS  
225  
N.005PLUS



4x

STOP PLUS  
500  
N.007PLUS



2x

PROTRACTOR  
PLUS  
N.008PLUS



4x

ANGLE PRECISION  
SQUARE (FLAT)  
PLUS 320X150  
N.010PLUS



2x

ANGLE PRECISION  
SQUARE (FLAT)  
PLUS 350X250  
N.011PLUS



8x

ANGLE BRACKET  
PLUS 185X175  
N.012PLUS



2x

ANGLE BRACKET  
PLUS 200X200  
N.013PLUS



4x

ANGLE BRACKET  
PLUS 300X190  
N.014PLUS



4x

ANGLE BRACKET  
PLUS 450X250  
N.015PLUS



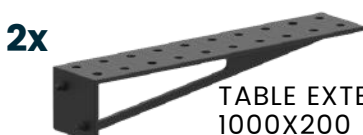
2x

ANGLE BRACKET PLUS  
270X500X175X100  
N.016PLUS



2x

TABLE EXTENSION  
PLUS 1000X100  
N.017PLUS



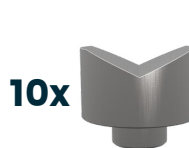
2x

TABLE EXTENSION  
1000X200  
N.018PLUS



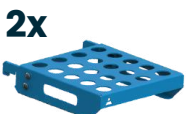
1x

WELDING TORCH  
HANDLE  
N.020



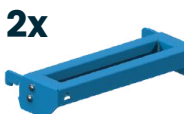
10x

PRISM  
Ø58MM 130°  
N.021



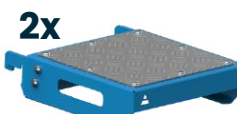
2x

FAST ASSEMBLY  
BOLT SHELF M  
T.011B



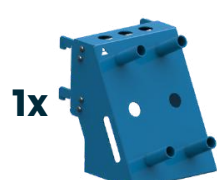
2x

CLAMP SHELF M  
T.011D



2x

FLATSHELF M  
T.011F



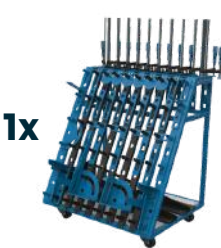
1x

MIX SHELF  
T.011H



1x

DOCUMENTATION  
SHELF  
T.011I



1x

TOOL TROLLEY M /  
TOOL TROLLEY L  
(OPTIONS)  
T.012B / T.012A

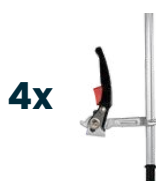
# TOOLKIT<sup>PLUS</sup> NO. 2

Number of jigs & fixtures included in the kit: 96



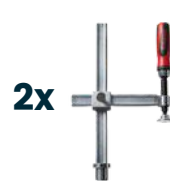
8x

FASTENING  
CLAMP  
N.001A



4x

FASTENING  
CLAMP  
WITH LEVER  
N.001B



2x

VARIABLE  
THROAT  
DEPTH CLAMP  
N.001C



2x

VARIABLE  
THROAT DEPTH  
WITH LEVER  
CLAMP  
N.001D



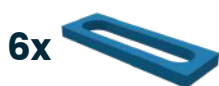
30x

FAST ASSEMBLY  
BOLT 23 PLUS  
N.002PLUS



6x

ECCENTRIC STOP  
PLUS Ø100  
N.003PLUS



6x

STOP PLUS  
150  
N.004PLUS



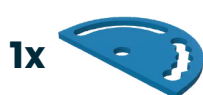
4x

STOP PLUS  
225  
N.005PLUS



2x

STOP PLUS  
500  
N.007PLUS



1x

PROTRACTOR  
PLUS  
N.008PLUS



4x

ANGLE PRECISION  
SQUARE (FLAT)  
PLUS 320X150  
N.010PLUS



2x

ANGLE PRECISION  
SQUARE (FLAT)  
PLUS 350X250  
N.011PLUS



4x

ANGLE BRACKET  
PLUS 185X175  
N.012PLUS



2x

ANGLE BRACKET  
PLUS 200X200  
N.013PLUS



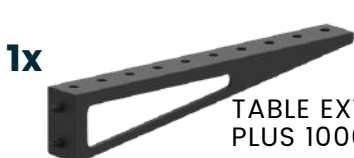
2x

ANGLE BRACKET  
PLUS 300X190  
N.014PLUS



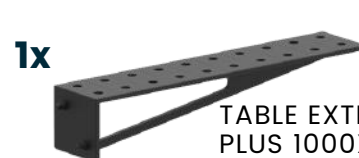
2x

ANGLE BRACKET  
PLUS 450X250  
N.015PLUS



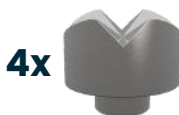
1x

TABLE EXTENSION  
PLUS 1000X100  
N.017PLUS



1x

TABLE EXTENSION  
PLUS 1000X200  
N.018PLUS



4x

PRISM Ø58MM  
130°/90°  
N.023



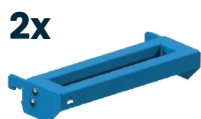
1x

WELDING TORCH  
HANDLE  
N.020



2x

FAST ASSEMBLY  
BOLT SHELF M  
T.011B



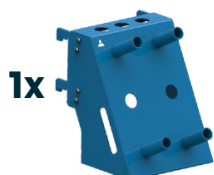
2x

CLAMP SHELF M  
T.011D



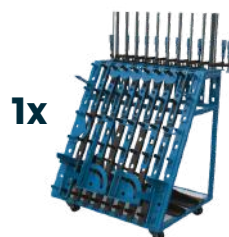
2x

FLATSHELF M  
T.011F



1x

MIX SHELF  
T.011H

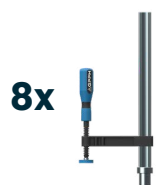


1x

TOOL TROLLEY M /  
TOOL TROLLEY L  
(OPTIONS)  
T.012B / T.012A

# TOOLKIT<sup>PLUS</sup> NO. 3

Number of jigs & fixtures included in the kit: 60



8x

FASTENING  
CLAMP  
N.001A



2x

FASTENING  
CLAMP  
WITH LEVER  
N.001B



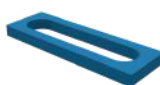
18x

FAST ASSEMBLY  
BOLT 23 PLUS  
N.002PLUS



4x

ECCENTRIC STOP  
PLUS Ø100  
N.003PLUS



4x

STOP PLUS  
150  
N.004PLUS



4x

STOP PLUS  
225  
N.005PLUS



1x

PROTRACTOR  
PLUS  
N.008PLUS



2x

ANGLE PRECISION  
SQUARE (FLAT)  
PLUS 320X150  
N.010PLUS



2x

ANGLE PRECISION  
SQUARE (FLAT)  
PLUS 350X250  
N.011PLUS



4x

ANGLE BRACKET  
PLUS 185X175  
N.012PLUS



2x

ANGLE BRACKET  
PLUS 200X200  
N.013PLUS



2x

ANGLE BRACKET  
PLUS 300X190  
N.014PLUS



1x

ANGLE BRACKET  
PLUS 450X250  
N.015PLUS



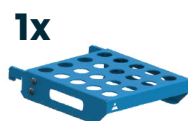
2x

PRISM Ø58MM  
130°/90°  
N.023



1x

WELDING TORCH  
HANDLE  
N.020



1x

FAST ASSEMBLY  
BOLT SHELF M  
T.011B



1x

CLAMP SHELF M  
T.011D

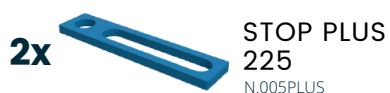
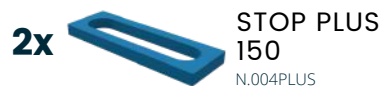


1x

FLATSHELF M  
T.011F

# TOOLKIT<sup>PLUS</sup> NO. 4

Number of jigs & fixtures included in the kit: 28



# TOOLKIT<sup>ECO</sup> NO. 1

Net price of toolkit ECO no. 1: 6 691 €

Number of jigs & fixtures included in the kit: 146



10x

FASTENING  
CLAMP  
N.001A



10x

FASTENING  
CLAMP  
WITH LEVER  
N.001B



5x

VARIABLE  
THROAT  
DEPTH CLAMP  
N.001C



5x

VARIABLE  
THROAT DEPTH  
WITH LEVER  
CLAMP  
N.001D



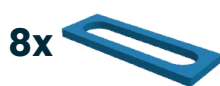
40x

FAST ASSEMBLY  
BOLT ECO 16  
N.002ECO



8x

ECCENTRIC STOP  
ECO Ø100  
N.003ECO



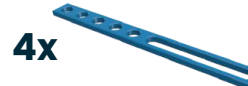
8x

STOP ECO  
150  
N.004ECO



4x

STOP ECO  
225  
N.005ECO



4x

STOP ECO  
500  
N.007ECO



2x

PROTRACTOR  
ECO  
N.008ECO



4x

ANGLE PRECISION  
SQUARE (FLAT)  
ECO 320X150  
N.010ECO



2x

ANGLE PRECISION  
SQUARE (FLAT)  
ECO 350X250  
N.011ECO



8x

ANGLE BRACKET  
ECO 185X175  
N.012ECO



2x

ANGLE BRACKET  
ECO 200X200  
N.013ECO



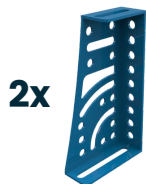
4x

ANGLE BRACKET  
ECO 300X190  
N.014ECO



4x

ANGLE BRACKET  
ECO 450X250  
N.015ECO



2x

ANGLE BRACKET ECO  
270X500X175X100  
N.016ECO



2x

TABLE EXTENSION  
ECO 1000X100  
N.017ECO



2x

TABLE EXTENSION  
ECO 1000X200  
N.018ECO



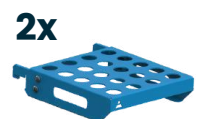
1x

WELDING TORCH  
HANDLE  
N.020



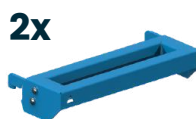
10x

PRISM  
Ø58MM 130°  
N.021



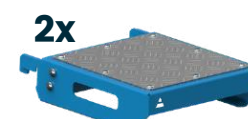
2x

FAST ASSEMBLY  
BOLT SHELF M  
T.011B



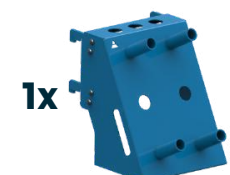
2x

CLAMP SHELF M  
T.011D



2x

FLAT SHELF M  
T.011F



1x

MIX SHELF  
T.011H



1x

DOCUMENTATION  
SHELF  
T.011I



1x

TOOL TROLLEY M /  
TOOL TROLLEY L  
(OPTIONS)  
T.012B / T.012A

# TOOLKIT<sup>ECO</sup> NO. 2

Number of jigs & fixtures included in the kit: 96



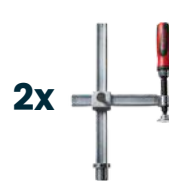
8x

FASTENING  
CLAMP  
N.001A



4x

FASTENING  
CLAMP  
WITH LEVER  
N.001B



2x

VARIABLE  
THROAT  
DEPTH CLAMP  
N.001C



2x

VARIABLE  
THROAT DEPTH  
WITH LEVER  
CLAMP  
N.001D



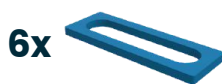
30x

FAST ASSEMBLY  
BOLT ECO 16  
N.002ECO



6x

ECCENTRIC STOP  
ECO Ø100  
N.003ECO



6x

STOP ECO  
150  
N.004ECO



4x

STOP ECO  
225  
N.005ECO



2x

STOP ECO  
500  
N.007ECO



1x

PROTRACTOR  
ECO  
N.008ECO



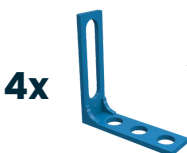
4x

ANGLE PRECISION  
SQUARE (FLAT)  
ECO 320X150  
N.010ECO



2x

ANGLE PRECISION  
SQUARE (FLAT)  
ECO 350X250  
N.011ECO



4x

ANGLE BRACKET  
ECO 185X175  
N.012ECO



2x

ANGLE BRACKET  
ECO 200X200  
N.013ECO



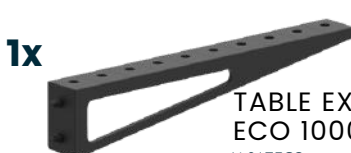
2x

ANGLE BRACKET  
ECO 300X190  
N.014ECO



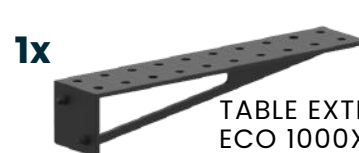
2x

ANGLE BRACKET  
ECO 450X250  
N.015ECO



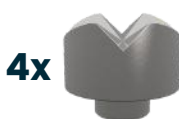
1x

TABLE EXTENSION  
ECO 1000X100  
N.017ECO



1x

TABLE EXTENSION  
ECO 1000X200  
N.018ECO



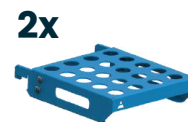
4x

PRISM Ø58MM  
130°/90°  
N.023



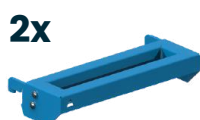
1x

WELDING TORCH  
HANDLE  
N.020



2x

FAST ASSEMBLY  
BOLT SHELF M  
T.011B



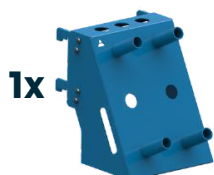
2x

CLAMP SHELF M  
T.011D



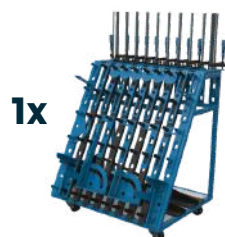
2x

FLATSHELF M  
T.011F



1x

MIX SHELF  
T.011H



1x

TOOL TROLLEY M /  
TOOL TROLLEY L  
(OPTIONS)  
T.012B / T.012A



# TOOLKIT<sup>ECO</sup> NO. 3

Number of jigs & fixtures included in the kit: 60



8x

FASTENING  
CLAMP  
N.001A



2x

FASTENING  
CLAMP  
WITH LEVER  
N.001B



18x

FAST ASSEMBLY  
BOLT ECO 16  
N.002ECO



4x

ECCENTRIC STOP  
ECO Ø100  
N.003ECO



4x

STOP ECO  
150  
N.004ECO



4x

STOP ECO  
225  
N.005ECO



1x

PROTRACTOR  
ECO  
N.008ECO



2x

ANGLE PRECISION  
SQUARE (FLAT)  
ECO 320X150  
N.010ECO



2x

ANGLE PRECISION  
SQUARE (FLAT)  
ECO 350X250  
N.011ECO



4x

ANGLE BRACKET  
ECO 185X175  
N.012ECO



2x

ANGLE BRACKET  
ECO 200X200  
N.013ECO



2x

ANGLE BRACKET  
ECO 300X190  
N.014ECO



1x

ANGLE BRACKET  
ECO 450X250  
N.015ECO



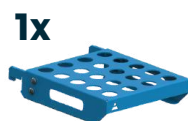
2x

PRISM Ø58MM  
130°/90°  
N.023



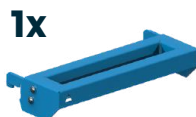
1x

WELDING TORCH  
HANDLE  
N.020



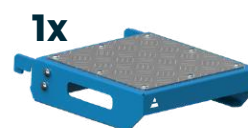
1x

FAST ASSEMBLY  
BOLT SHELF M  
T.011B



1x

CLAMP SHELF M  
T.011D



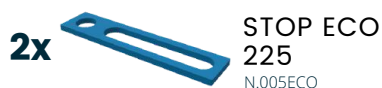
1x

FLATSHELF M  
T.011F

# TOOLKIT<sup>ECO</sup> NO. 4

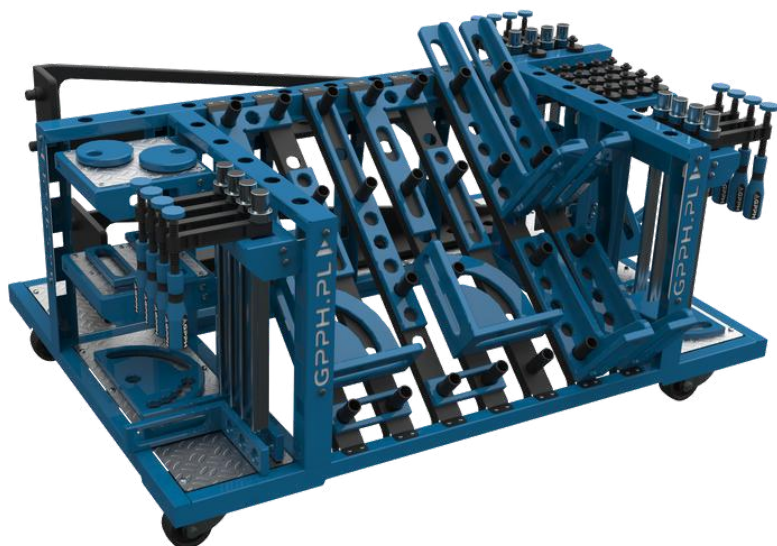
Net price of toolkit ECO no. 4: 813 €

Number of jigs & fixtures included in the kit: 28



# ORDER DOES MATTER

## GPPH TOOL TROLLEY



One of the many advantages of the small tool trolley is that it fits under most dimensions of GPPH Welding Tables. You have all the tools at your fingertips while working!

T.012B | Cat. No.

The large GPPH tool trolley will accommodate a set of tools even for the most demanding user! Thanks to it, your workplace will become transparent like never before, and GPPH tools will be clearly arranged and more accessible.

T.012A | Cat. No.

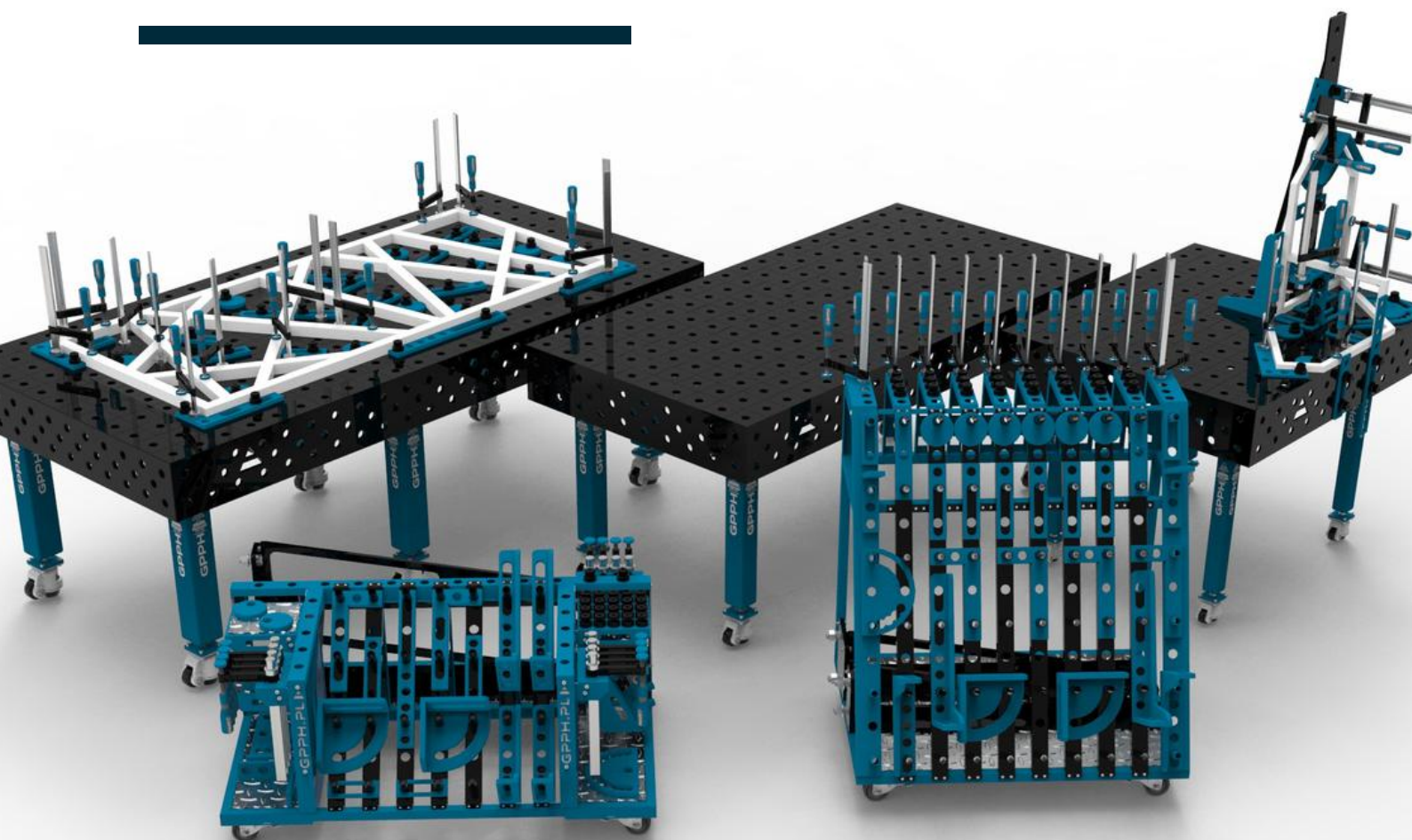


# THANK YOU FOR YOUR TIME SPENT ON ACQUAINTING WITH GPPH OFFER

WE HOPE FOR LONG-LASTING AND SUCCESSFUL  
COOPERATION.

IN CASE OF ANY QUESTIONS, I OFFER HELP  
AND EXPERTISE.

---



**GRUPA PROJEKTOWO  
PRODUKCYJNO HANDLOWA**

